

BANISTERIA

A JOURNAL DEVOTED TO THE NATURAL HISTORY OF VIRGINIA

ISSN 1066-0712

Published by the Virginia Natural History Society

The Virginia Natural History Society (VNHS) is a nonprofit organization dedicated to the dissemination of scientific information on all aspects of natural history in the Commonwealth of Virginia, including botany, zoology, ecology, archaeology, anthropology, paleontology, geology, geography, and climatology. The society's periodical *Banisteria* is a peer-reviewed, open access, online-only journal. Submitted manuscripts are published individually immediately after acceptance. A single volume is compiled at the end of each year and published online. The Editor will consider manuscripts on any aspect of natural history in Virginia or neighboring states if the information concerns a species native to Virginia or if the topic is directly related to regional natural history (as defined above). Biographies and historical accounts of relevance to natural history in Virginia also are suitable for publication in *Banisteria*. Membership dues and inquiries about back issues should be directed to the Co-Treasurers, and correspondence regarding *Banisteria* to the Editor. For additional information regarding the VNHS, including other membership categories, annual meetings, field events, pdf copies of papers from past issues of *Banisteria*, and instructions for prospective authors visit <http://virginiannaturalhistorysociety.com/>

Editorial Staff: *Banisteria*

Editor

Todd Fredericksen,
Ferrum College
215 Ferrum Mountain Road
Ferrum, Virginia 24088

Associate Editors

Philip Coulling, Nature Camp Incorporated
Clyde Kessler, Virginia Tech
Nancy Moncrief, Virginia Museum of Natural History
Karen Powers, Radford University
Stephen Powers, Roanoke College
C. L. Staines, Smithsonian Environmental Research Center

Copy Editor

Kal Ivanov, Virginia Museum of Natural History

Copyright held by the author(s). This is an open access article distributed under the terms of the Creative Commons, Attribution Non-Commercial License, which permits unrestricted non-commercial use, distribution, and reproduction in any medium, provided the original author(s) and source are credited.
<http://creativecommons.org/licenses/by/4.0/>

RESEARCH ARTICLE

COEFFICIENTS OF CONSERVATISM (C-VALUES) FOR THE FLORA OF VIRGINIA

DOUGLAS A. DEBERRY¹, JOSEPH A. THOMPSON², ZACHARY R. BRADFORD³, DAVID L. DAVIS⁴, J. CHRISTOPHER LUDWIG⁵, RODERICK H. SIMMONS⁶, AND THOMAS F. WIEBOLDT⁷

1 *Environmental Science and Policy Program, William & Mary* **2** *Vanasse Hangen Brustlin, Inc. (VHB)* **3** *Chesapeake Bay Region Steward, Virginia DCR Division of Natural Heritage* **4** *Director, Office of Wetlands & Stream Protection, Virginia Department of Environmental Quality* **5** *Chief Biologist (retired), Virginia DCR Division of Natural Heritage* **6** *Natural Resource Manager/Plant Ecologist, City of Alexandria* **7** *Curator (retired), Massey Herbarium, Virginia Polytechnic Institute and State University*

Corresponding author: Douglas A. DeBerry (dadeberry@wm.edu) and Joseph A. Thompson (jathompson@vhb.com)

Editor: T. Fredericksen | Received 16 April 2021 | Accepted 21 May 2021 | Published 28 May 2021

<https://virgianaturalhistorysociety.com/banisteria/banisteria.htm#ban55>

Citation: DeBerry, D. A., J. A. Thompson, Z. R. Bradford, D. L. Davis, J. C. Ludwig, R. H. Simmons, and T. F. Wieboldt. 2021. Coefficients of Conservatism (C-values) for the Flora of Virginia 55: 112–149.

ABSTRACT

Following an initial listing effort in the early 2000s that covered a portion of Virginia’s flora, we completed and updated the Coefficients of Conservatism (C-values) for all native and naturalized species and subspecific vascular plant taxa in Virginia. This included new rankings for 2038 of Virginia’s 3164 total species and sub-specific taxa, as well as updated rankings (as appropriate) for the “wetland” subset of the state’s taxa that had originally been listed in 2004. This effort marks the first comprehensive C-value list for the entire Virginia flora (not including the recent 2020 update). Future uses will include habitat evaluation and conservation planning based on the techniques of Floristic Quality Assessment (FQA), which will be facilitated through a web-available interface hosted by the Virginia Department of Environmental Quality.

Keywords: Floristic Quality Assessment (FQA), plant conservation, ecological indicators, floristic integrity, habitat assessment.

INTRODUCTION

Coefficients of Conservatism (C-values) are numerical assignments between 0 and 10 applied to plant species by an independent panel of botanical experts knowledgeable about the

flora of a particular region (Chamberlain et al., 2013). The C-value list provides a foundation for Floristic Quality Assessment (FQA), the term given to the calculation and subsequent analysis of weighted metrics originally developed in the Chicago region for evaluating the “quality” of native plant communities (Swink & Wilhelm, 1979, 1994). Quality is a relative term used to approximate similarity of a particular plant species assemblage to pre-settlement conditions in a similar habitat type (Maser, 1990). Implicit in its application is the notion that areas with species assemblages closer to those of pre-settlement times (i.e., prior to European colonization of North America) are more reflective of high-quality habitat (Nichols, 1999; DeBerry et al., 2015), and the assumption that certain types of anthropogenic disturbance represent vectors of introduction for “non-conservative” (e.g., invasive or cosmopolitan) species. It is important to note that “disturbance” is in itself a relative term that could be used to describe some human activities known to occur during pre-settlement times, such as incendiary fires set by Native Americans to clear patches of ground – activities that would also be categorized as “anthropogenic” (Noss, 1985). However, the concept of disturbance as it relates to FQA is most often associated with post-settlement events; that is, destructive anthropogenic disturbances such as logging and development following European occupation of the North American continent and the concurrent introduction of non-native plants (Chamberlain et al., 2013).

Recognizing the potential benefits of FQA in ecosystem assessment, the Virginia Department of Environmental Quality (DEQ) secured an Environmental Protection Agency (EPA) Wetland Development Grant in the early 2000s to develop a C-value list covering a subset of Virginia’s flora with a distribution in wetlands. At the time, the 1131 species included in that effort represented roughly 1/3 of Virginia’s total number of native and naturalized species. The resultant Virginia wetland C-value list was completed by DEQ in 2004. In the intervening years, through a monumental effort of several botanists and the leadership of the Flora of Virginia Executive Board, the first comprehensive manual of Virginia’s flora since the 1700s was compiled and published in 2012 and updated in 2020, providing updated taxonomic treatments, diagnostic keys, and descriptions for 3164 and 3348 species and sub-specific plant taxa, respectively (Weakley et al., 2012; Weakley et al., 2020)*. The publication of the *Flora*, along with recent technology innovations such as the release of the web-available *Flora of Virginia* mobile application (“Flora of Virginia App”; Weakley et al., 2020), have strengthened the resolve among scientists, managers, natural resource agencies, and others to use floristic quality as an assessment tool in Virginia.

Recent reviews on the use of FQA have highlighted the conservatism concept – the theoretical basis for C-value assignments – as the most valuable aspect of the FQA approach (Chamberlain et al., 2013; DeBerry et al., 2015). A key to the success of this concept is developing a *comprehensive* C-value list for all species and sub-specific taxa within a region, and this idea derives from the original authors of the FQA technique (Swink & Wilhelm, 1979, 1994). Although the original 2004 Virginia wetland C-value list has been used in multiple studies (e.g., DeBerry, 2006; Moser et al., 2007, Ahn & Dee, 2011; Dee & Ahn, 2012; DeBerry & Perry, 2015; Bosquet & Fleming, 2017; Dee et al., 2018), over the past decade-and-a-half it has become increasingly clear that the utility of this resource could not be fully realized until the remaining 2000+ native and naturalized species/sub-specific taxa also had C-value assignments. The purpose of this project was to fill this knowledge gap and finalize the C-value list for all of Virginia’s flora.

* The C-value list presented in this paper was finalized prior to the 2020 updates to the *Flora of Virginia*; taxa that were added in the 2020 version will be ranked in future efforts.

FLORA OF VIRGINIA C-VALUE ASSIGNMENT PANEL

The Flora of Virginia C-value Assignment Panel (hereafter “Panel”) was composed of a Panel Chair (primary author) and six other members (co-authors). The composition of this Panel collectively provided botanical expertise across the full sweep of Virginia geography, combining extensive field experience in all physiographic provinces with intimate knowledge of Virginia’s vast herbarium accessions. The Panel included three returning members of the 2004 C-value assignment committee (Doug DeBerry, Dave Davis, and Tom Wieboldt), which proved beneficial in promoting consistency between the prior and current listing efforts. Also included was one co-author of the *Flora of Virginia* (Chris Ludwig), and other members who had contributed species descriptions to the *Flora* and participated in the development of the *Flora of Virginia* App. Lastly, one Panel member (Doug DeBerry) had served on four other regional C-value assignment committees including the Mid-Atlantic C-value List (Chamberlain & Ingram, 2012) and the C-value listing effort for the EPA National Wetland Condition Assessment (Magee et al., 2014).

METHODOLOGY

The Panel assigned C-values to all species and subspecific taxa in the *Flora of Virginia* (Weakley et al., 2012) that were not previously assigned in 2004, which included 2038 taxa (Table 1). Panel members were encouraged to rank only those taxa that could be accurately assessed based on firsthand experience in the field. To keep the listing process consistent with the 2004 effort,

Table 1. Flora of Virginia C-value assignments – summary of taxa.

Category	Number	Notes
A Species and Subspecific Taxa in the FOV*	3164	From list provided by Flora of Virginia Project Executive Board (based on Weakley et al. 2012)
B VA Taxa Already Assigned C-values (2004)	1126	The original number was 1131, but 5 taxa from the 2004 list are not treated in the FOV
C VA Taxa Remaining to be Assigned	2038	= A – B
D Non-Native Taxa in FOV	566	These are the taxa designated with an asterisk (*) in the FOV; assigned a value of 0 if non-invasive, or -5, -3, or -1 based on high, medium, or low invasiveness, respectively (Heffernan et al. 2014)
E "Nativity Uncertain" Taxa in FOV	47	These are the taxa designated with an asterisk-question mark (*?) in the FOV (<i>input provided by Panel</i>)
F Both Native and Non-Native Populations in VA	10	These are the taxa designated with *(in part) in the FOV (<i>input provided by Panel</i>)
Taxa Left to Assign or Revise After Non-natives Removed:	1529	= C – D + E + F

* FOV = *Flora of Virginia* (Weakley et al. 2012)

non-native taxa (566 total) automatically received a value of “0”; however, negative values were applied to some non-native invasive taxa as described below. In addition to the new assignments, the Panel rectified the 2004 list with taxonomy, nativity, and distribution information from the *Flora of Virginia* (Weakley et al., 2012) and reviewed the 2004 list for potential C-value revisions. After non-native taxa were automatically assigned, the remaining 1529 taxa were left for the Panel to rank. The values given by the seven panelists were averaged to decide the final C-value presented in the Appendix. Taxa that were given different C-values by the seven Panel members (at least one outside the standard deviation of the average) were opened to discussion before finalizing the value.

C-Value Assignment Categories

The Panel used the same assignment categories provided for the 2004 list, with some minor phrasing revisions to make the categories more consistent with the current scientific literature on FQA. The categories are summarized in Table 2. In addition, the current list adopted negative values for non-native invasive species consistent with the Virginia Invasive Plant Species List (Heffernan et al. 2014). The organization of the Virginia Invasive Plant Species List into ranks of either “high”, “medium”, or “low” risk of invasion facilitated a convenient corresponding C-value assignment of -5, -3, and -1 for non-native invasive species, respectively. All other non-native species (i.e., non-native, non-invasive) retained a C-value of 0, which was consistent with the 2004 list.

Table 2. Flora of Virginia C-value categories.

C-Value Range	Ranking Criteria
-5, -3, -1	High, medium, and low invasiveness rank, respectively (Heffernan et al. 2014).
0	Non-native, non-invasive taxa.
1-3	Ruderal or “weedy” plants with a characteristically broad ecological amplitude and low fidelity to high quality natural communities. These taxa are often opportunistic colonizers and are tolerant of anthropogenic disturbance.
4-7	Plants with an intermediate range of ecological tolerances and moderate expression of fidelity to high quality natural communities. These taxa typify a stable phase of some natural community but persist under minor anthropogenic disturbances.
8-10	Plants that exhibit a high degree of fidelity to high quality natural communities and are typically intolerant of anthropogenic disturbance. Such taxa tend to have a localized distribution and/or are edaphically restricted with a characteristically narrow ecological amplitude and a high degree of fidelity to a narrow range of synecological parameters.

Master C-value List – Flora of Virginia

Prior to initiating the listing procedure, the Panel Chair (DeBerry) developed a master file in Microsoft Excel for the panelists to use throughout the project. The full list of species and subspecific taxa from the *Flora of Virginia* (Weakley et al., 2012) were provided in database format by the Flora of Virginia Project (Bland Crowder, Executive Director), but rectifying the

2004 list with the current *Flora* required extensive nomenclature updates as many of the names on the 2004 list have been revised. To accomplish this, the Chair developed a series of overlapping database lookup functions to automatically match synonyms where possible, followed by a quality check to update all remaining taxa from the 2004 list with current nomenclature. This process was also repeated for the Mid-Atlantic C-value list (see below) so that C-values from that database could be provided for reference.

Once created, the Master C-value List was provided to all Panel members with the following information:

- List of all species and subspecific taxa contained in the *Flora of Virginia* (Weakley et al. 2012);
- Mid-Atlantic C-value List (Chamberlain & Ingram, 2012), provided for reference; and,
- Virginia 2004 wetland C-value List – provided for reference.

The 2004 C-values were automatically imported into the file and populated in the active listing column. In addition, Virginia non-natives (0) and non-native invasive species (-5, -3, or -1) were populated for the current list. The remaining blank cells were to be filled independently by each individual Panel member with new C-value ranks. The list was sorted in the same order as the taxa are presented in the *Flora of Virginia* (i.e., lycophytes→pteridophytes→gymnosperms→dicots→monocots), then within each of these groups, alphabetically by family, genus, and finally species (or subspecific taxon). Panelists were asked to keep the list in the same order as presented in the spreadsheet, which allowed for easier post-processing of the data.

Lastly, panelists were reminded that the Mid-Atlantic C-value list, which was provided in the master list as a general reference, does not translate directly to the Virginia list because the Mid-Atlantic list does not include C-values for non-native species. Therefore, a “0” on the Mid-Atlantic list is equivalent to a *native* species with no fidelity to natural communities and the highest tolerance to anthropogenic disturbance, which would be a “1” on the Virginia list. For this reason, panelists using the Mid-Atlantic list as a point of reference were encouraged to factor in the difference in scale [i.e., a “4” on the Mid-Atlantic list might be more likely to correspond to a “5” on the VA list, but this correspondence is not perfect since there are 11 categories for native plants on the Mid-Atlantic list (0-10) and only 10 categories for the VA list (1-10)].

RESULTS AND DISCUSSION

As indicated in Table 1, 1529 taxa were ranked by the Panel. An additional 39 taxa from the original 2004 list were flagged for further consideration, and these were either revised or verified in subsequent meetings/correspondence. The list was delivered on May 29, 2020 (DeBerry, 2020), with all 3164 Virginia native and naturalized species and subspecific plant taxa from Weakley et al. (2012) accounted for and updated with current C-values. The final alphabetically-sorted *Flora of Virginia* C-value List is provided in the Appendix.

The mean C-value for the entire Virginia flora is 5.05, and the mean C-value for the native Virginia flora is 6.37. Based on a comprehensive review by Bried et al. (2012) this native flora result compares favorably with other state lists, particularly in the northeast region (e.g., Connecticut=6.60, Massachusetts=5.45, New Hampshire=4.85, Rhode Island=5.17, Vermont=6.09). The distribution of Virginia C-values is shown in Figure 1. The most frequently assigned value was 7, followed by 0 for non-native, non-invasive taxa. For comparison, the

frequency histogram for the original 2004 C-value list is provided in Figure 2, which shows a distribution very similar to the current list (albeit a smaller subset).

Future use of the updated Flora of Virginia C-value List will be facilitated through development of a web-based FQA calculator, which will be hosted by the Virginia DEQ. The Panel Chair is currently developing that web-based tool, which is anticipated to be available for public use by the end of 2021. An important outcome of this project is that the final list is comprehensive, providing a much-needed foundation from which to facilitate future revisions based on changes to the state’s flora. This will be particularly important with respect to ongoing taxonomic/nomenclatural changes, additions to Virginia’s flora through range expansions, and research-based discoveries related to plant conservatism (e.g., Weakley et al., 2020).

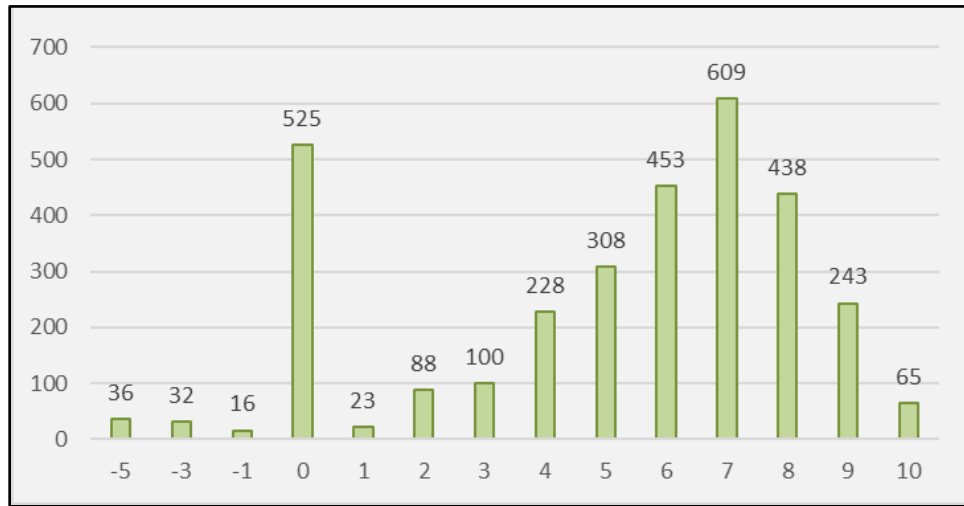


Figure 1. C-value frequency distribution – final Flora of Virginia C-value list.

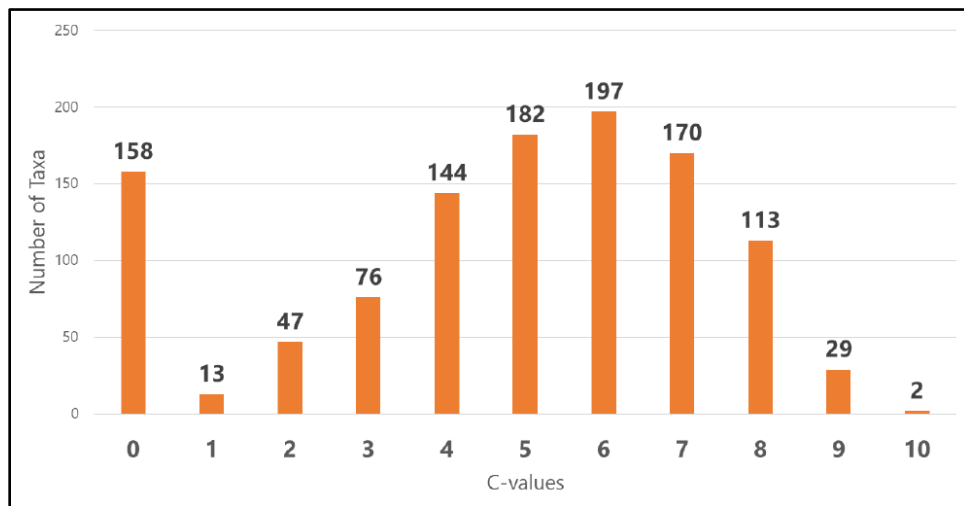


Figure 2. Distribution of original 2004 Virginia C-value list (for comparison).

ACKNOWLEDGEMENTS

This project was completed under a Wetland Development Grant (WDG) from the EPA (PTE Federal Award No. BG-98392506-0), which was administered by the Virginia Institute of Marine Science (VIMS) on behalf of DEQ. We specifically thank Kirk Havens (VIMS) and Michelle Henicheck (DEQ) for advocacy in securing the grant and help in facilitating meetings. The Flora of Virginia Project Executive Board was very forthcoming with the necessary master list of Virginia's taxa, which was presented in a database format that was easily incorporated into this project; thanks especially to Bland Crowder (Executive Director) for his quick response with that invaluable resource. Thanks to Randee Humphrey, Kristin Thoroman, and the other staff at Lewis Ginter Botanical Garden in Richmond, Virginia for graciously allowing us to hold our meetings in their excellent education wing. Finally, we greatly appreciate the helpful comments received on an earlier draft of this paper from Dr. Todd Fredericksen and two anonymous reviewers.

REFERENCES

- Ahn, C., & S. Dee. 2011. Early development of plant community in a created mitigation wetland as affected by introduced hydrologic design elements. *Ecological Engineering* 37: 1324–1333.
- Bousquet, W. S., & G. P. Fleming. 2017. Floristics of the Abrams Creek Wetlands, a Calcareous Fen Complex in Winchester City and Frederick County, Virginia. *Castanea*, 82: 132–155.
- Bried, J. T., K. L. Strout, & T. Portante. 2012. Coefficients of conservatism for the vascular flora of New York and New England: Interstate comparisons and expert opinion bias. *Northeastern Naturalist* 19: 101–114.
- Chamberlain, S. J., & H. M. Ingram. 2012. Developing coefficients of conservatism to advance floristic quality assessment in the Mid-Atlantic region. *Journal of the Torrey Botanical Society* 139: 416–427.
- Chamberlain, S. J., D. W. Heller, M. S. Fennessy, & D. A. DeBerry. 2013. Hydrophytes of the Mid-Atlantic Region: Ecology, Communities, Assessment, and Diversity. pp. 159–258 In R.P. Brooks and D.W. Heller (eds.) *Mid-Atlantic Freshwater Wetlands: Advances in Wetlands Science, Management, Policy, and Practice*. Springer, New York.
- DeBerry, D. A. 2006. Floristic Quality Index: ecological and management implications in created and natural wetlands. Ph.D. Dissertation, College of William and Mary, Williamsburg, Virginia.
- DeBerry, D. A. 2020. Flora of Virginia Coefficients of Conservatism Assignment Project: Summary Report. William and Mary, Williamsburg, VA. EPA Wetland Development Grant (PTE Federal Award No. BG-98392506-0).
- DeBerry, D. A., S. J. Chamberlain, & J. W. Matthews. 2015. Trends in floristic quality assessment for wetland evaluation. *Wetland Science and Practice* 32: 12–22.
- DeBerry, D. A., & J. E. Perry. 2015. Using the floristic quality concept to assess created and natural wetlands: ecological and management implications. *Ecological Indicators* 53: 247–257.
- Dee, S. M., & C. Ahn. 2012. Soil properties predict plant community development of mitigation wetlands created in the Virginia Piedmont, USA. *Environmental Management* 49: 1022–1036.

- Dee, S., A. Korol, C. Ahn, J. A. Lee, & M. Means. 2018. Patterns of vegetation and soil properties in a beaver-created wetland located on the Coastal Plain of Virginia. *Landscape and Ecological Engineering* 14: 1–11.
- Heffernan, K., E. Engle, & C. Richardson. 2014. Virginia Invasive Plant Species List. Virginia Department of Conservation and Recreation, Division of Natural Heritage. Natural Heritage Technical Document 14–11. Richmond.
- Magee, T., M. Fennessy, K. Blocksom, R. Sullivan, & N. Kirchner. 2014. Evaluating Vegetation in the National Wetland Condition Assessment. Presented at Joint Aquatic Sciences Meeting, Portland, OR.
- Maser, C. 1990. On the “naturalness” of natural areas: a perspective for the future. *Natural Areas Journal* 10: 129–133.
- Moser, K., C. Ahn, & G. Noe. 2007. Characterization of microtopography and its influence on vegetation patterns in created wetlands. *Wetlands*, 27: 1081–1097.
- Nichols, S. A. 1999. Floristic Quality Assessment of Wisconsin lake plant communities with example applications. *Journal of Lake and Reservoir Management* 15: 133–141.
- Noss, R. F. 1985. On characterizing presettlement vegetation: how and why. *Natural Areas Journal* 5: 5–19.
- Swink, F., & G. Wilhelm. 1979. *Plants of the Chicago Region*. 3rd ed. Morton Arboretum, Lisle. 922 pp.
- Swink, F., & G. Wilhelm. 1994. *Plants of the Chicago Region*. 4th ed. Indiana Academy of Science, Indianapolis, IN. 921 pp.
- Weakley, A. S., J. C. Ludwig, & J. F. Townsend. 2012. *Flora of Virginia*. Bland Crowder ed. Foundation of the Flora of Virginia Project Inc., Richmond. Fort Worth: Botanical Research Institute.
- Weakley, A. S., J. C. Ludwig, J. F. Townsend, & G. P. Fleming. 2020. *Flora of Virginia*. With significant additions and updates. Mobile app. Crowder, B. (ed.). Foundation of the Flora of Virginia Project Inc., Richmond, VA. High Country Apps, Bozeman, MT.

Appendix. Flora of Virginia C-values.

Taxon Name	C
<i>Abies balsamea</i>	9
<i>Abies fraseri</i>	9
<i>Abutilon theophrasti</i>	0
<i>Acalypha deamii</i>	6
<i>Acalypha gracilens</i>	2
<i>Acalypha ostryifolia</i>	2
<i>Acalypha rhomboidea</i>	2
<i>Acalypha virginica</i>	3
<i>Acanthospermum australe</i>	0
<i>Acer floridanum</i>	7
<i>Acer negundo</i> var. <i>negundo</i>	4
<i>Acer nigrum</i>	7
<i>Acer pensylvanicum</i>	7
<i>Acer platanoides</i>	-3
<i>Acer rubrum</i>	2
<i>Acer saccharinum</i>	5
<i>Acer saccharum</i>	6
<i>Acer spicatum</i>	7
<i>Achillea millefolium</i>	2
<i>Acmispon helleri</i>	6
<i>Aconitum reclinatum</i>	9
<i>Aconitum uncinatum</i>	7
<i>Acorus calamus</i>	0
<i>Actaea pachypoda</i>	7
<i>Actaea podocarpa</i>	8
<i>Actaea racemosa</i>	7
<i>Actaea rubifolia</i>	9
<i>Adiantum capillus-veneris</i>	10
<i>Adiantum pedatum</i>	7
<i>Adlumia fungosa</i>	8
<i>Aegilops cylindrica</i>	0
<i>Aegopodium podagraria</i>	0
<i>Aeschynomene indica</i>	0
<i>Aeschynomene virginica</i>	8
<i>Aesculus flava</i>	7
<i>Aesculus sylvatica</i>	7
<i>Agalinis auriculata</i>	8
<i>Agalinis fasciculata</i>	7
<i>Agalinis maritima</i>	8
<i>Agalinis obtusifolia</i>	7
<i>Agalinis paupercula</i> var. <i>paupercula</i>	9

Taxon Name	C
<i>Agalinis purpurea</i>	5
<i>Agalinis setacea</i>	7
<i>Agalinis tenuifolia</i> var. <i>tenuifolia</i>	5
<i>Agastache nepetoides</i>	6
<i>Agastache scrophulariifolia</i>	7
<i>Ageratina altissima</i> var. <i>altissima</i>	4
<i>Ageratina altissima</i> var. <i>roanensis</i>	7
<i>Ageratina aromatica</i>	7
<i>Agrimonia gryposepala</i>	4
<i>Agrimonia microcarpa</i>	7
<i>Agrimonia parviflora</i>	4
<i>Agrimonia pubescens</i>	6
<i>Agrimonia rostellata</i>	6
<i>Agrostemma githago</i> var. <i>githago</i>	0
<i>Agrostis altissima</i>	8
<i>Agrostis capillaris</i>	-3
<i>Agrostis elliotiana</i>	4
<i>Agrostis gigantea</i>	0
<i>Agrostis hyemalis</i>	4
<i>Agrostis perennans</i>	4
<i>Agrostis scabra</i>	6
<i>Agrostis stolonifera</i>	0
<i>Ailanthus altissima</i>	-5
<i>Aira caryophylla</i>	0
<i>Aira elegans</i>	0
<i>Aira praecox</i>	0
<i>Ajuga chamaepitys</i>	0
<i>Ajuga reptans</i>	0
<i>Akebia quinata</i>	-3
<i>Albizia julibrissin</i>	-3
<i>Alcea rosea</i>	0
<i>Aletris aurea</i>	9
<i>Aletris farinosa</i>	6
<i>Alisma gramineum</i>	0
<i>Alisma subcordatum</i>	6
<i>Alliaria petiolata</i>	-5
<i>Allium allegheniense</i>	9
<i>Allium ampeloprasum</i>	0
<i>Allium canadense</i> var. <i>canadense</i>	2
<i>Allium cernuum</i>	7
<i>Allium oxyphilum</i>	9

Taxon Name	C
<i>Allium tricoccum</i>	7
<i>Allium vineale</i>	0
<i>Alnus incana</i> ssp. <i>rugosa</i>	8
<i>Alnus serrulata</i>	5
<i>Alopecurus aequalis</i> var. <i>aequalis</i>	7
<i>Alopecurus carolinianus</i>	4
<i>Alopecurus geniculatus</i>	0
<i>Alopecurus pratensis</i>	0
<i>Alternanthera philoxeroides</i>	-5
<i>Althaea officinalis</i>	0
<i>Alyssum alyssoides</i>	0
<i>Amaranthus albus</i>	0
<i>Amaranthus blitum</i>	0
<i>Amaranthus cannabinus</i>	7
<i>Amaranthus hybridus</i>	0
<i>Amaranthus palmeri</i>	0
<i>Amaranthus pumilus</i>	10
<i>Amaranthus retroflexus</i>	2
<i>Amaranthus spinosus</i>	0
<i>Ambrosia artemisiifolia</i>	1
<i>Ambrosia bidentata</i>	0
<i>Ambrosia trifida</i>	5
<i>Amelanchier arborea</i>	5
<i>Amelanchier canadensis</i>	6
<i>Amelanchier laevis</i>	7
<i>Amelanchier nantucketensis</i>	10
<i>Amelanchier obovalis</i>	7
<i>Amelanchier sanguinea</i>	7
<i>Amelanchier spicata</i>	6
<i>Amiantium muscitoxicum</i>	7
<i>Ammannia coccinea</i>	4
<i>Ammannia latifolia</i>	5
<i>Ammophila breviligulata</i>	9
<i>Amorpha fruticosa</i>	5
<i>Ampelopsis arborea</i>	5
<i>Ampelopsis brevipedunculata</i>	-5
<i>Ampelopsis cordata</i>	7
<i>Amphiachyris dracunculoides</i>	0
<i>Amphicarpaea bracteata</i>	4
<i>Amphicarpum amphicarpon</i>	9
<i>Amsonia tabernaemontana</i> var. <i>tabernaemontana</i>	6
<i>Anagallis arvensis</i> ssp. <i>arvensis</i>	0

Taxon Name	C
<i>Anagallis minima</i>	7
<i>Anaphalis margaritacea</i>	5
<i>Andropogon gerardii</i>	7
<i>Andropogon glaucopsis</i>	6
<i>Andropogon glomeratus</i> var. <i>glomeratus</i>	4
<i>Andropogon glomeratus</i> var. <i>hirsutior</i>	5
<i>Andropogon gyrans</i>	4
<i>Andropogon mohrii</i>	9
<i>Andropogon perangustatus</i>	7
<i>Andropogon tenuispatheus</i>	6
<i>Andropogon ternarius</i> var. <i>ternarius</i>	5
<i>Andropogon virginicus</i> var. <i>decipiens</i>	7
<i>Andropogon virginicus</i> var. <i>virginicus</i>	3
<i>Anemone acutiloba</i>	8
<i>Anemone americana</i>	7
<i>Anemone berlandieri</i>	9
<i>Anemone canadensis</i>	8
<i>Anemone lancifolia</i>	7
<i>Anemone quinquefolia</i> var. <i>minima</i>	7
<i>Anemone quinquefolia</i> var. <i>quinquefolia</i>	6
<i>Anemone virginiana</i> var. <i>virginiana</i>	5
<i>Angelica triquinata</i>	7
<i>Angelica venenosa</i>	6
<i>Anoda cristata</i>	0
<i>Antennaria howellii</i> ssp. <i>neodioica</i>	6
<i>Antennaria howellii</i> ssp. <i>petaloidea</i>	6
<i>Antennaria neglecta</i>	4
<i>Antennaria parlinii</i> ssp. <i>fallax</i>	4
<i>Antennaria parlinii</i> ssp. <i>parlinii</i>	4
<i>Antennaria plantaginifolia</i>	5
<i>Antennaria solitaria</i>	7
<i>Antennaria virginica</i>	8
<i>Anthemis arvensis</i>	0
<i>Anthemis cotula</i>	0
<i>Anthoxanthum aristatum</i>	0
<i>Anthoxanthum hirtum</i>	10
<i>Anthoxanthum odoratum</i>	0
<i>Anthriscus caucalis</i>	0
<i>Anticlea glauca</i>	8
<i>Aphanes australis</i>	0
<i>Apios americana</i>	5
<i>Aplectrum hyemale</i>	7

Taxon Name	C
<i>Apocynum androsaemifolium</i>	4
<i>Apocynum cannabinum</i>	2
<i>Apocynum sibiricum</i>	5
<i>Aquilegia canadensis</i>	5
<i>Arabidopsis lyrata</i> ssp. <i>lyrata</i>	7
<i>Arabidopsis thaliana</i>	0
<i>Arabis patens</i>	8
<i>Arabis pycnocarpa</i> var. <i>adpressipilis</i>	8
<i>Aralia hispida</i>	8
<i>Aralia nudicaulis</i>	7
<i>Aralia racemosa</i>	7
<i>Aralia spinosa</i>	3
<i>Arctium minus</i>	0
<i>Arctostaphylos uva-ursi</i>	10
<i>Arenaria lanuginosa</i> var. <i>lanuginosa</i>	9
<i>Arenaria leptoclados</i>	0
<i>Arenaria serpyllifolia</i>	0
<i>Arethusa bulbosa</i>	10
<i>Arisaema dracontium</i>	6
<i>Arisaema triphyllum</i> ssp. <i>pusillum</i>	7
<i>Arisaema triphyllum</i> ssp. <i>stewardsonii</i>	7
<i>Arisaema triphyllum</i> ssp. <i>triphyllum</i>	6
<i>Aristida curtissii</i>	3
<i>Aristida dichotoma</i>	3
<i>Aristida lanosa</i>	7
<i>Aristida longespica</i> var. <i>geniculata</i>	4
<i>Aristida longespica</i> var. <i>longespica</i>	4
<i>Aristida oligantha</i>	2
<i>Aristida purpurascens</i>	6
<i>Aristida tuberculosa</i>	9
<i>Aristida virgata</i>	6
<i>Arnica acaulis</i>	5
<i>Arnoglossum atriplicifolium</i>	5
<i>Arnoglossum reniforme</i>	8
<i>Aronia arbutifolia</i>	6
<i>Aronia melanocarpa</i>	7
<i>Aronia prunifolia</i>	6
<i>Arrhenatherum elatius</i> var. <i>bulbosum</i>	0
<i>Arrhenatherum elatius</i> var. <i>elatius</i>	0
<i>Artemisia annua</i>	0
<i>Artemisia ludoviciana</i>	0
<i>Artemisia stelleriana</i>	0

Taxon Name	C
<i>Artemisia vulgaris</i>	0
<i>Arthraxon hispidus</i> var. <i>hispidus</i>	-3
<i>Aruncus dioicus</i>	6
<i>Arundinaria gigantea</i>	5
<i>Arundinaria tecta</i>	5
<i>Arundo donax</i>	0
<i>Asarum canadense</i>	7
<i>Asclepias amplexicaulis</i>	5
<i>Asclepias exaltata</i>	7
<i>Asclepias incarnata</i> var. <i>incarnata</i>	5
<i>Asclepias incarnata</i> var. <i>pulchra</i>	5
<i>Asclepias lanceolata</i>	9
<i>Asclepias longifolia</i>	9
<i>Asclepias purpurascens</i>	6
<i>Asclepias quadrifolia</i>	7
<i>Asclepias rubra</i>	8
<i>Asclepias syriaca</i>	3
<i>Asclepias tuberosa</i> var. <i>rolfsii</i>	8
<i>Asclepias tuberosa</i> var. <i>tuberosa</i>	4
<i>Asclepias variegata</i>	6
<i>Asclepias verticillata</i>	8
<i>Asclepias viridiflora</i>	6
<i>Asimina parviflora</i>	7
<i>Asimina triloba</i>	5
<i>Asparagus officinalis</i>	0
<i>Asplenium bradleyi</i>	9
<i>Asplenium montanum</i>	8
<i>Asplenium pinnatifidum</i>	9
<i>Asplenium platyneuron</i>	4
<i>Asplenium resiliens</i>	8
<i>Asplenium rhizophyllum</i>	8
<i>Asplenium ruta-muraria</i> var. <i>cryptolepis</i>	9
<i>Asplenium trichomanes</i>	8
<i>Aster tataricus</i>	0
<i>Astilbe biternata</i>	8
<i>Astragalus canadensis</i> var. <i>canadensis</i>	6
<i>Astragalus distortus</i> var. <i>distortus</i>	9
<i>Astragalus neglectus</i>	9
<i>Athyrium asplenioides</i>	4
<i>Atriplex glabriuscula</i>	9
<i>Atriplex mucronata</i>	8
<i>Atriplex patula</i>	0

Taxon Name	C
Atriplex prostrata	0
Aureolaria flava	7
Aureolaria laevigata	7
Aureolaria pedicularia	7
Aureolaria virginica	7
Avena sativa	0
Avenella flexuosa	7
Axonopus fissifolius	1
Axonopus furcatus	5
Azolla caroliniana	6
Baccharis halimifolia	3
Bacopa caroliniana	10
Bacopa innominata	10
Bacopa monnieri	9
Bacopa rotundifolia	10
Baptisia albescens	7
Baptisia australis var. australis	8
Baptisia cinerea	8
Baptisia tinctoria	5
Barbarea verna	0
Barbarea vulgaris	0
Bartonia paniculata ssp. paniculata	7
Bartonia verna	8
Bartonia virginica	6
Bassia hirsuta	0
Bassia scoparia	0
Bellis perennis	0
Berberis bealei	0
Berberis canadensis	8
Berberis thunbergii	-3
Berchemia scandens	6
Berteroa incana	0
Betula alleghaniensis	7
Betula cordifolia	8
Betula lenta var. lenta	6
Betula lenta var. uber	7
Betula nigra	4
Betula populifolia	9
Bidens aristosa	0
Bidens bipinnata	1
Bidens cernua	4
Bidens comosa	4

Taxon Name	C
Bidens connata	3
Bidens discoidea	6
Bidens frondosa	2
Bidens laevis	5
Bidens trichosperma	3
Bidens vulgata	3
Bignonia capreolata	5
Blephilia ciliata	7
Blephilia hirsuta	7
Boechera burkii	9
Boechera canadensis	6
Boechera dentata	7
Boechera laevigata	6
Boechera serotina	10
Boehmeria cylindrica	4
Bolboschoenus fluviatilis	8
Bolboschoenus novae-angliae	8
Bolboschoenus robustus	7
Boltonia asteroides var. glastifolia	9
Boltonia caroliniana	5
Boltonia diffusa var. diffusa	0
Boltonia montana	10
Borrichia frutescens	8
Botrychium lanceolatum var. angustisegmentum	8
Botrychium matricariifolium	6
Botrychium simplex var. simplex	8
Botrypus virginianus	5
Bouteloua curtipendula var. curtipendula	8
Boykinia aconitifolia	8
Brachyelytrum aristosum	7
Brachyelytrum erectum	6
Brachypodium sylvaticum ssp. sylvaticum	0
Brasenia schreberi	6
Brassica juncea	0
Brassica nigra	0
Brassica rapa var. rapa	0
Brickellia eupatorioides var. eupatorioides	7
Briza minor	0
Bromus catharticus var. catharticus	0
Bromus ciliatus	7
Bromus commutatus	0
Bromus hordeaceus ssp. hordeaceus	0

Taxon Name	C
<i>Bromus inermis</i>	0
<i>Bromus japonicus</i>	0
<i>Bromus kalmii</i>	8
<i>Bromus latiglumis</i>	6
<i>Bromus nottowanus</i>	7
<i>Bromus pubescens</i>	6
<i>Bromus racemosus</i>	0
<i>Bromus secalinus</i>	0
<i>Bromus sterilis</i>	0
<i>Bromus tectorum</i>	0
<i>Broussonetia papyrifera</i>	0
<i>Bryodesma rupestre</i>	8
<i>Buchnera americana</i>	7
<i>Buckleya distichophylla</i>	7
<i>Buddleja davidii</i>	0
<i>Buglossoides arvensis</i> ssp. <i>arvensis</i>	0
<i>Bulbostylis capillaris</i>	4
<i>Bulbostylis ciliatifolia</i>	7
<i>Bulbostylis coarctata</i>	8
<i>Bupleurum gerardii</i>	0
<i>Bupleurum rotundifolium</i>	0
<i>Burmannia biflora</i>	9
<i>Cabomba caroliniana</i>	8
<i>Cakile edentula</i>	8
<i>Cakile maritima</i> ssp. <i>maritima</i>	0
<i>Calamagrostis canadensis</i> var. <i>canadensis</i>	8
<i>Calamagrostis cinnoides</i>	6
<i>Calamagrostis porteri</i> ssp. <i>porteri</i>	7
<i>Calamovilfa brevipilis</i>	9
<i>Calepina irregularis</i>	0
<i>Callicarpa americana</i>	4
<i>Callitriche heterophylla</i> var. <i>heterophylla</i>	4
<i>Callitriche palustris</i>	7
<i>Callitriche terrestris</i>	4
<i>Calopogon pallidus</i>	10
<i>Calopogon tuberosus</i>	9
<i>Caltha palustris</i>	8
<i>Calycanthus floridus</i>	5
<i>Calystegia catesbeiana</i>	9
<i>Calystegia sepium</i>	1
<i>Calystegia silvatica</i> ssp. <i>fraterniflora</i>	2
<i>Calystegia soldanella</i>	0

Taxon Name	C
<i>Calystegia spithamea</i> ssp. <i>spithamea</i>	7
<i>Calystegia spithamea</i> ssp. <i>stans</i>	7
<i>Camassia scilloides</i>	8
<i>Camelina microcarpa</i>	0
<i>Camelina sativa</i>	0
<i>Campanula americana</i>	6
<i>Campanula aparinoides</i> var. <i>aparinoides</i>	7
<i>Campanula divaricata</i>	7
<i>Campanula rapunculoides</i>	0
<i>Campanula rotundifolia</i>	9
<i>Campsis radicans</i>	2
<i>Capnoides sempervirens</i>	7
<i>Capsella bursa-pastoris</i>	0
<i>Cardamine angustata</i>	6
<i>Cardamine bulbosa</i>	7
<i>Cardamine clematitis</i>	9
<i>Cardamine concatenata</i>	6
<i>Cardamine diphylla</i>	7
<i>Cardamine dissecta</i>	7
<i>Cardamine douglassii</i>	7
<i>Cardamine flagellifera</i>	9
<i>Cardamine flexuosa</i>	0
<i>Cardamine hirsuta</i>	0
<i>Cardamine impatiens</i>	0
<i>Cardamine micranthera</i>	8
<i>Cardamine parviflora</i> var. <i>arenicola</i>	6
<i>Cardamine pensylvanica</i>	5
<i>Cardamine pratensis</i>	7
<i>Cardamine rotundifolia</i>	7
<i>Cardiospermum halicacabum</i>	0
<i>Carduus acanthoides</i> ssp. <i>acanthoides</i>	0
<i>Carduus nutans</i>	0
<i>Carex abscondita</i>	7
<i>Carex aestivaliformis</i>	8
<i>Carex aestivalis</i>	7
<i>Carex aggregata</i>	4
<i>Carex alata</i>	5
<i>Carex albicans</i>	6
<i>Carex albolutescens</i>	5
<i>Carex albursina</i>	7
<i>Carex amphibola</i>	4
<i>Carex annectens</i>	5

Taxon Name	C
<i>Carex appalachica</i>	7
<i>Carex aquatilis</i>	10
<i>Carex arctata</i>	8
<i>Carex arenaria</i>	0
<i>Carex argyrantha</i>	7
<i>Carex atherodes</i>	10
<i>Carex atlantica</i>	4
<i>Carex aureolensis</i>	5
<i>Carex austrodeflexa</i>	8
<i>Carex baileyi</i>	7
<i>Carex barrattii</i>	8
<i>Carex bebbii</i>	9
<i>Carex blanda</i>	4
<i>Carex brevior</i>	4
<i>Carex bromoides</i> ssp. <i>bromoides</i>	7
<i>Carex bromoides</i> ssp. <i>montana</i>	8
<i>Carex brunnescens</i> var. <i>sphaerostachya</i>	8
<i>Carex bullata</i>	6
<i>Carex bushii</i>	6
<i>Carex buxbaumii</i>	8
<i>Carex canescens</i> var. <i>disjuncta</i>	8
<i>Carex careyana</i>	8
<i>Carex caroliniana</i>	5
<i>Carex cephalophora</i>	5
<i>Carex cherokeensis</i>	0
<i>Carex collinsii</i>	8
<i>Carex communis</i>	6
<i>Carex comosa</i>	7
<i>Carex complanata</i>	4
<i>Carex conjuncta</i>	7
<i>Carex conoidea</i>	9
<i>Carex corrugata</i>	6
<i>Carex crawei</i>	10
<i>Carex crebriflora</i>	7
<i>Carex crinita</i> var. <i>brevicrinis</i>	5
<i>Carex crinita</i> var. <i>crinita</i>	5
<i>Carex cristatella</i>	7
<i>Carex crus-corvi</i>	8
<i>Carex cumberlandensis</i>	7
<i>Carex davisii</i>	8
<i>Carex debilis</i>	5
<i>Carex decomposita</i>	9

Taxon Name	C
<i>Carex digitalis</i> var. <i>digitalis</i>	6
<i>Carex digitalis</i> var. <i>floridana</i>	6
<i>Carex digitalis</i> var. <i>macropoda</i>	7
<i>Carex divisa</i>	0
<i>Carex eburnea</i>	9
<i>Carex echinata</i> ssp. <i>echinata</i>	8
<i>Carex emmonsii</i>	7
<i>Carex emoryi</i>	8
<i>Carex extensa</i>	0
<i>Carex festucacea</i>	4
<i>Carex flaccosperma</i>	6
<i>Carex flava</i>	8
<i>Carex flexuosa</i>	7
<i>Carex floridana</i>	7
<i>Carex folliculata</i>	7
<i>Carex frankii</i>	4
<i>Carex fraseriana</i>	8
<i>Carex gigantea</i>	7
<i>Carex glaucescens</i>	7
<i>Carex glaucoidea</i>	4
<i>Carex gracilescens</i>	6
<i>Carex gracillima</i>	6
<i>Carex granularis</i>	6
<i>Carex gravida</i>	0
<i>Carex grayi</i>	6
<i>Carex grisea</i>	5
<i>Carex gynandra</i>	6
<i>Carex hirsutella</i>	5
<i>Carex hirtifolia</i>	6
<i>Carex hitchcockiana</i>	7
<i>Carex hormathodes</i>	8
<i>Carex howei</i>	7
<i>Carex hyalinolepis</i>	8
<i>Carex hystericina</i>	7
<i>Carex interior</i>	9
<i>Carex intumescens</i> var. <i>fernaldii</i>	7
<i>Carex intumescens</i> var. <i>intumescens</i>	5
<i>Carex jamesii</i>	7
<i>Carex joorii</i>	7
<i>Carex juniperorum</i>	9
<i>Carex kobomugi</i>	-5
<i>Carex kraliana</i>	6

Taxon Name	C
<i>Carex lacustris</i>	8
<i>Carex laevivaginata</i>	5
<i>Carex lasiocarpa</i> var. <i>americana</i>	9
<i>Carex laxiculmis</i> var. <i>copulata</i>	7
<i>Carex laxiculmis</i> var. <i>laxiculmis</i>	6
<i>Carex laxiflora</i>	6
<i>Carex leavenworthii</i>	4
<i>Carex leptalea</i> var. <i>harperi</i>	7
<i>Carex leptalea</i> var. <i>leptalea</i>	7
<i>Carex leptoneuria</i>	7
<i>Carex lonchocarpa</i>	7
<i>Carex longii</i>	6
<i>Carex louisianica</i>	8
<i>Carex lucorum</i> var. <i>austrolucorum</i>	7
<i>Carex lupuliformis</i>	8
<i>Carex lupulina</i>	6
<i>Carex lurida</i>	4
<i>Carex manhartii</i>	8
<i>Carex meadii</i>	8
<i>Carex mesochorea</i>	6
<i>Carex mitchelliana</i>	7
<i>Carex molesta</i>	7
<i>Carex molestiformis</i>	5
<i>Carex muehlenbergii</i> var. <i>enervis</i>	6
<i>Carex muehlenbergii</i> var. <i>muehlenbergii</i>	6
<i>Carex nigromarginata</i>	5
<i>Carex normalis</i>	5
<i>Carex oblita</i>	7
<i>Carex oklahomensis</i>	0
<i>Carex oligocarpa</i>	7
<i>Carex ormostachya</i>	8
<i>Carex oxylepis</i>	7
<i>Carex pallescens</i>	9
<i>Carex pedunculata</i> var. <i>pedunculata</i>	7
<i>Carex pellita</i>	8
<i>Carex pennsylvanica</i>	5
<i>Carex physorhyncha</i>	6
<i>Carex pigra</i>	6
<i>Carex planispicata</i>	6
<i>Carex plantaginea</i>	8
<i>Carex platyphylla</i>	7
<i>Carex polymorpha</i>	8

Taxon Name	C
<i>Carex prairea</i>	9
<i>Carex prasina</i>	6
<i>Carex purpurifera</i>	8
<i>Carex radiata</i>	5
<i>Carex reniformis</i>	7
<i>Carex retroflexa</i>	7
<i>Carex reznicekii</i>	7
<i>Carex roanensis</i>	8
<i>Carex rosea</i>	6
<i>Carex rugosperma</i>	7
<i>Carex ruthii</i>	8
<i>Carex scabrata</i>	7
<i>Carex schweinitzii</i>	8
<i>Carex scoparia</i> var. <i>scoparia</i>	5
<i>Carex seorsa</i>	7
<i>Carex shortiana</i>	6
<i>Carex silicea</i>	9
<i>Carex sparganioides</i>	5
<i>Carex squarrosa</i>	6
<i>Carex sterilis</i>	10
<i>Carex stipata</i> var. <i>maxima</i>	6
<i>Carex stipata</i> var. <i>stipata</i>	4
<i>Carex straminea</i>	9
<i>Carex striata</i> var. <i>brevis</i>	7
<i>Carex striatula</i>	6
<i>Carex stricta</i>	6
<i>Carex styloflexa</i>	6
<i>Carex suberecta</i>	8
<i>Carex superata</i>	7
<i>Carex swanii</i>	5
<i>Carex tetanica</i>	7
<i>Carex texensis</i>	4
<i>Carex tonsa</i>	6
<i>Carex torta</i>	7
<i>Carex tribuloides</i> var. <i>sangamonensis</i>	6
<i>Carex tribuloides</i> var. <i>tribuloides</i>	3
<i>Carex trichocarpa</i>	4
<i>Carex trisperma</i> var. <i>trisperma</i>	8
<i>Carex typhina</i>	6
<i>Carex umbellata</i>	5
<i>Carex utriculata</i>	10
<i>Carex venusta</i>	7

Taxon Name	C
<i>Carex vesicaria</i>	9
<i>Carex vestita</i>	7
<i>Carex virescens</i>	7
<i>Carex vulpinoidea</i>	3
<i>Carex willdenowii</i>	6
<i>Carex woodii</i>	7
<i>Carphephorus bellidifolius</i>	9
<i>Carphephorus tomentosus</i>	9
<i>Carpinus caroliniana</i>	5
<i>Carya aquatica</i>	8
<i>Carya carolinae-septentrionalis</i>	9
<i>Carya cordiformis</i>	6
<i>Carya glabra</i>	6
<i>Carya illinoensis</i>	0
<i>Carya ovalis</i>	6
<i>Carya ovata</i>	7
<i>Carya pallida</i>	7
<i>Carya tomentosa</i>	5
<i>Castanea dentata</i>	7
<i>Castanea pumila</i>	6
<i>Castilleja coccinea</i>	8
<i>Catalpa bignonioides</i>	0
<i>Catalpa speciosa</i>	0
<i>Caulophyllum giganteum</i>	7
<i>Caulophyllum thalictroides</i>	7
<i>Ceanothus americanus</i>	6
<i>Celastrus orbiculatus</i>	-5
<i>Celastrus scandens</i>	5
<i>Celtis laevigata</i>	4
<i>Celtis occidentalis</i>	3
<i>Celtis tenuifolia</i>	7
<i>Cenchrus incertus</i>	3
<i>Cenchrus longispinus</i>	3
<i>Cenchrus tribuloides</i>	4
<i>Centaurea benedicta</i>	0
<i>Centaurea cyanus</i>	0
<i>Centaurea debeauxii</i> ssp. <i>thuillieri</i>	0
<i>Centaurea jacea</i>	0
<i>Centaurea nigrescens</i>	0
<i>Centaurea stoebe</i> ssp. <i>micranthos</i>	-5
<i>Centella erecta</i>	3
<i>Centrosema virginianum</i>	6

Taxon Name	C
<i>Cephalanthus occidentalis</i>	6
<i>Cerastium brachypetalum</i>	0
<i>Cerastium fontanum</i> ssp. <i>vulgare</i>	0
<i>Cerastium glomeratum</i>	0
<i>Cerastium nutans</i>	4
<i>Cerastium semidecandrum</i>	0
<i>Cerastium velutinum</i> var. <i>velutinum</i>	9
<i>Ceratophyllum demersum</i>	6
<i>Ceratophyllum echinatum</i>	7
<i>Cercis canadensis</i> var. <i>canadensis</i>	5
<i>Chaenorrhinum minus</i>	0
<i>Chaerophyllum procumbens</i> var. <i>procumbens</i>	5
<i>Chaerophyllum procumbens</i> var. <i>shortii</i>	7
<i>Chaerophyllum tainturieri</i>	3
<i>Chaiturus marrubiastrum</i>	0
<i>Chamaecrista fasciculata</i> var. <i>fasciculata</i>	2
<i>Chamaecrista fasciculata</i> var. <i>macroserma</i>	8
<i>Chamaecrista nictitans</i> var. <i>nictitans</i>	2
<i>Chamaecyparis thyoides</i>	9
<i>Chamaelirium luteum</i>	7
<i>Chamerion platyphyllum</i>	6
<i>Chasmanthium latifolium</i>	6
<i>Chasmanthium laxum</i>	4
<i>Chasmanthium sessiliflorum</i>	7
<i>Cheilanthes alabamensis</i>	10
<i>Cheilanthes castanea</i>	10
<i>Cheilanthes feei</i>	10
<i>Cheilanthes lanosa</i>	8
<i>Cheilanthes tomentosa</i>	9
<i>Chelidonium majus</i>	0
<i>Chelone cuthbertii</i>	9
<i>Chelone glabra</i>	6
<i>Chelone obliqua</i>	8
<i>Chenopodium album</i>	0
<i>Chenopodium berlandieri</i>	0
<i>Chenopodium foggii</i>	8
<i>Chenopodium simplex</i>	6
<i>Chenopodium standleyanum</i>	7
<i>Chimaphila maculata</i>	6
<i>Chimaphila umbellata</i> var. <i>cisatlantica</i>	7
<i>Chionanthus virginicus</i>	6

Taxon Name	C
<i>Chloris verticillata</i>	0
<i>Chloris virgata</i>	0
<i>Chondrilla juncea</i>	0
<i>Chrysogonum virginianum</i> var. <i>brevistolon</i>	8
<i>Chrysogonum virginianum</i> var. <i>virginianum</i>	7
<i>Chrysopsis gossypina</i>	9
<i>Chrysopsis mariana</i>	4
<i>Chrysosplenium americanum</i>	7
<i>Cichorium intybus</i>	0
<i>Cicuta bulbifera</i>	8
<i>Cicuta maculata</i> var. <i>maculata</i>	6
<i>Cinna arundinacea</i>	5
<i>Cinna latifolia</i>	8
<i>Circaea alpina</i> ssp. <i>alpina</i>	8
<i>Circaea canadensis</i> ssp. <i>canadensis</i>	6
<i>Cirsium altissimum</i>	5
<i>Cirsium arvense</i>	-5
<i>Cirsium carolinianum</i>	9
<i>Cirsium discolor</i>	3
<i>Cirsium horridulum</i> var. <i>horridulum</i>	4
<i>Cirsium muticum</i>	7
<i>Cirsium nuttallii</i>	9
<i>Cirsium pumilum</i>	5
<i>Cirsium repandum</i>	9
<i>Cirsium virginianum</i>	8
<i>Cirsium vulgare</i>	-3
<i>Citrus trifoliata</i>	0
<i>Cladium jamaicense</i>	8
<i>Cladium mariscoides</i>	8
<i>Claytonia caroliniana</i>	7
<i>Claytonia virginica</i>	6
<i>Cleistesiospis bifaria</i>	8
<i>Cleistesiospis divaricata</i>	8
<i>Clematis addisonii</i>	9
<i>Clematis albicoma</i>	10
<i>Clematis catesbyana</i>	8
<i>Clematis coactilis</i>	9
<i>Clematis crispa</i>	8
<i>Clematis occidentalis</i> var. <i>occidentalis</i>	8
<i>Clematis ochroleuca</i>	8
<i>Clematis terniflora</i>	0

Taxon Name	C
<i>Clematis viorna</i>	7
<i>Clematis virginiana</i>	4
<i>Clematis viticaulis</i>	10
<i>Clethra acuminata</i>	7
<i>Clethra alnifolia</i>	4
<i>Clinopodium arkansanum</i>	9
<i>Clinopodium calamintha</i>	0
<i>Clinopodium vulgare</i>	3
<i>Clintonia borealis</i>	8
<i>Clintonia umbellulata</i>	7
<i>Clitoria mariana</i> var. <i>mariana</i>	6
<i>Cnidioscolus stimulosus</i>	7
<i>Cocculus carolinus</i>	7
<i>Coeloglossum viride</i>	7
<i>Coelorachis rugosa</i>	9
<i>Coleataenia anceps</i> ssp. <i>anceps</i>	4
<i>Coleataenia anceps</i> ssp. <i>rhizomata</i>	5
<i>Coleataenia longifolia</i> ssp. <i>combsii</i>	7
<i>Coleataenia longifolia</i> ssp. <i>longifolia</i>	6
<i>Coleataenia rigidula</i> ssp. <i>condensa</i>	5
<i>Coleataenia rigidula</i> ssp. <i>rigidula</i>	4
<i>Coleataenia stipitata</i>	5
<i>Collinsia verna</i>	6
<i>Collinsonia canadensis</i>	6
<i>Collinsonia verticillata</i>	8
<i>Comandra umbellata</i> var. <i>umbellata</i>	5
<i>Commelina communis</i>	-1
<i>Commelina diffusa</i>	0
<i>Commelina erecta</i>	8
<i>Commelina virginica</i>	5
<i>Comptonia peregrina</i>	6
<i>Conioselinum chinense</i>	10
<i>Conium maculatum</i>	0
<i>Conoclinium coelestinum</i>	4
<i>Conopholis americana</i>	7
<i>Consolida ajacis</i>	0
<i>Convallaria majalis</i>	0
<i>Convallaria pseudomajalis</i>	7
<i>Convolvulus arvensis</i>	0
<i>Conyza bonariensis</i>	0
<i>Conyza canadensis</i> var. <i>canadensis</i>	1
<i>Conyza canadensis</i> var. <i>pusilla</i>	2

Taxon Name	C
<i>Corallorhiza bentleyi</i>	7
<i>Corallorhiza maculata</i> var. <i>maculata</i>	7
<i>Corallorhiza maculata</i> var. <i>occidentalis</i>	10
<i>Corallorhiza odontorhiza</i>	7
<i>Corallorhiza wisteriana</i>	8
<i>Coreopsis auriculata</i>	7
<i>Coreopsis delphiniifolia</i>	7
<i>Coreopsis falcata</i>	9
<i>Coreopsis grandiflora</i> var. <i>harveyana</i>	0
<i>Coreopsis lanceolata</i>	0
<i>Coreopsis linifolia</i>	9
<i>Coreopsis major</i>	6
<i>Coreopsis pubescens</i>	7
<i>Coreopsis tinctoria</i> var. <i>tinctoria</i>	0
<i>Coreopsis tripteris</i>	5
<i>Coreopsis verticillata</i>	5
<i>Cornus alternifolia</i>	6
<i>Cornus amomum</i>	4
<i>Cornus canadensis</i>	9
<i>Cornus florida</i>	5
<i>Cornus obliqua</i>	8
<i>Cornus racemosa</i>	7
<i>Cornus rugosa</i>	8
<i>Cornus stolonifera</i>	0
<i>Cornus stricta</i>	5
<i>Corydalis flavula</i>	5
<i>Corylus americana</i>	5
<i>Corylus cornuta</i> var. <i>cornuta</i>	6
<i>Crataegus aemula</i>	8
<i>Crataegus aprica</i>	8
<i>Crataegus beata</i>	7
<i>Crataegus berberifolia</i>	7
<i>Crataegus calpodendron</i>	8
<i>Crataegus chrysoarpa</i> var. <i>dodgei</i>	5
<i>Crataegus coccinea</i>	5
<i>Crataegus collina</i>	5
<i>Crataegus compacta</i>	7
<i>Crataegus craytonii</i>	6
<i>Crataegus crus-galli</i> var. <i>crus-galli</i>	3
<i>Crataegus crus-galli</i> var. <i>pyracanthifolia</i>	4
<i>Crataegus disperma</i>	7
<i>Crataegus intricata</i> var. <i>biltmoreana</i>	5

Taxon Name	C
<i>Crataegus intricata</i> var. <i>boyntonii</i>	7
<i>Crataegus intricata</i> var. <i>intricata</i>	4
<i>Crataegus intricata</i> var. <i>rubella</i>	5
<i>Crataegus intricata</i> var. <i>straminea</i>	6
<i>Crataegus iracunda</i>	6
<i>Crataegus macracantha</i>	5
<i>Crataegus macrosperma</i>	5
<i>Crataegus margarettae</i> var. <i>angustifolia</i>	6
<i>Crataegus margarettae</i> var. <i>brownii</i>	6
<i>Crataegus margarettae</i> var. <i>margarettae</i>	6
<i>Crataegus marshallii</i>	7
<i>Crataegus mollis</i> var. <i>mollis</i>	5
<i>Crataegus monogyna</i>	0
<i>Crataegus munda</i> var. <i>pexa</i>	8
<i>Crataegus pennsylvanica</i>	7
<i>Crataegus persimilis</i>	5
<i>Crataegus phaenopyrum</i>	6
<i>Crataegus pruinosa</i> var. <i>dissona</i>	5
<i>Crataegus pruinosa</i> var. <i>gattingeri</i>	6
<i>Crataegus pruinosa</i> var. <i>parvula</i>	5
<i>Crataegus pruinosa</i> var. <i>pruinosa</i>	5
<i>Crataegus pruinosa</i> var. <i>rugosa</i>	6
<i>Crataegus punctata</i>	6
<i>Crataegus schuettei</i>	5
<i>Crataegus succulenta</i> var. <i>neofluvialis</i>	7
<i>Crataegus succulenta</i> var. <i>succulenta</i>	4
<i>Crataegus uniflora</i> var. <i>uniflora</i>	5
<i>Crataegus vailiae</i>	7
<i>Crataegus viridis</i>	6
<i>Crepidomanes intricatum</i>	10
<i>Crepis capillaris</i>	0
<i>Crepis pulchra</i>	0
<i>Crocانthemum bicknellii</i>	9
<i>Crocانthemum canadense</i>	7
<i>Crocانthemum propinquum</i>	8
<i>Croptilon divaricatum</i>	4
<i>Crotalaria purshii</i>	7
<i>Crotalaria rotundifolia</i> var. <i>vulgaris</i>	8
<i>Crotalaria sagittalis</i>	4
<i>Crotalaria spectabilis</i>	0
<i>Croton capitatus</i>	0
<i>Croton glandulosus</i> var. <i>septentrionalis</i>	0

Taxon Name	C
<i>Croton monanthogynus</i>	5
<i>Croton willdenowii</i>	6
<i>Cryptotaenia canadensis</i>	5
<i>Ctenium aromaticum</i>	9
<i>Cunila origanoides</i>	6
<i>Cuphea viscosissima</i>	4
<i>Cuscuta campestris</i>	1
<i>Cuscuta cephalanthi</i>	6
<i>Cuscuta compacta</i>	5
<i>Cuscuta coryli</i>	6
<i>Cuscuta gronovii</i>	3
<i>Cuscuta indecora</i>	6
<i>Cuscuta pentagona</i>	1
<i>Cuscuta polygonorum</i>	6
<i>Cuscuta rostrata</i>	7
<i>Cuthbertia graminea</i>	9
<i>Cycloloma atriplicifolium</i>	0
<i>Cyclospermum leptophyllum</i>	0
<i>Cymbalaria muralis</i> ssp. <i>muralis</i>	0
<i>Cynanchum laeve</i>	1
<i>Cynodon dactylon</i> var. <i>dactylon</i>	0
<i>Cynoglossum officinale</i>	0
<i>Cynoglossum virginianum</i> var. <i>virginianum</i>	5
<i>Cynosurus echinatus</i>	0
<i>Cyperus bipartitus</i>	4
<i>Cyperus compressus</i>	4
<i>Cyperus croceus</i>	4
<i>Cyperus dentatus</i>	10
<i>Cyperus diandrus</i>	7
<i>Cyperus difformis</i>	0
<i>Cyperus echinatus</i>	4
<i>Cyperus erythrorhizos</i>	4
<i>Cyperus esculentus</i> var. <i>leptostachyus</i>	2
<i>Cyperus filicinus</i>	5
<i>Cyperus filiculmis</i>	4
<i>Cyperus flavescens</i>	3
<i>Cyperus flavicomus</i>	6
<i>Cyperus granitophilus</i>	10
<i>Cyperus grayi</i>	7
<i>Cyperus haspan</i>	7
<i>Cyperus houghtonii</i>	10
<i>Cyperus hystricinus</i>	7

Taxon Name	C
<i>Cyperus iria</i>	0
<i>Cyperus lancastricensis</i>	4
<i>Cyperus lupulinus</i> ssp. <i>lupulinus</i>	5
<i>Cyperus lupulinus</i> ssp. <i>macilentus</i>	4
<i>Cyperus odoratus</i> var. <i>engelmannii</i>	7
<i>Cyperus odoratus</i> var. <i>odoratus</i>	3
<i>Cyperus plukenetii</i>	8
<i>Cyperus polystachyos</i>	5
<i>Cyperus pseudovegetus</i>	4
<i>Cyperus refractus</i>	6
<i>Cyperus retrofractus</i>	6
<i>Cyperus retrorsus</i>	5
<i>Cyperus rotundus</i>	0
<i>Cyperus squarrosus</i>	5
<i>Cyperus strigosus</i>	3
<i>Cypripedium acaule</i>	6
<i>Cypripedium candidum</i>	10
<i>Cypripedium kentuckiense</i>	10
<i>Cypripedium parviflorum</i> var. <i>pubescens</i>	7
<i>Cypripedium reginae</i>	10
<i>Cyrilla racemiflora</i>	8
<i>Cystopteris bulbifera</i>	6
<i>Cystopteris protrusa</i>	7
<i>Cystopteris tennesseensis</i>	9
<i>Cystopteris tenuis</i>	9
<i>Cytisus scoparius</i>	0
<i>Dactylis glomerata</i>	0
<i>Dactyloctenium aegyptium</i>	0
<i>Danthonia compressa</i>	6
<i>Danthonia sericea</i>	5
<i>Danthonia spicata</i>	4
<i>Dasistoma macrophyllum</i>	8
<i>Datura stramonium</i>	1
<i>Daucus carota</i>	0
<i>Decodon verticillatus</i>	6
<i>Decumaria barbara</i>	6
<i>Delphinium exaltatum</i>	8
<i>Delphinium tricorne</i>	7
<i>Dendrolycopodium dendroideum</i>	8
<i>Dendrolycopodium hickeyi</i>	6
<i>Dendrolycopodium obscurum</i>	5
<i>Dennstaedtia punctilobula</i>	4

Taxon Name	C
<i>Deparia acrostichoides</i>	7
<i>Deschampsia cespitosa</i>	9
<i>Descurainia pinnata</i> var. <i>brachycarpa</i>	6
<i>Descurainia sophia</i>	0
<i>Desmodium canadense</i>	8
<i>Desmodium canescens</i>	4
<i>Desmodium ciliare</i>	3
<i>Desmodium cuspidatum</i> var. <i>cuspidatum</i>	7
<i>Desmodium fernaldii</i>	7
<i>Desmodium glabellum</i>	3
<i>Desmodium laevigatum</i>	5
<i>Desmodium lineatum</i>	6
<i>Desmodium marilandicum</i>	4
<i>Desmodium nuttallii</i>	4
<i>Desmodium obtusum</i>	5
<i>Desmodium ochroleucum</i>	7
<i>Desmodium paniculatum</i> var. <i>epetiolatum</i>	7
<i>Desmodium paniculatum</i> var. <i>paniculatum</i>	4
<i>Desmodium perplexum</i>	2
<i>Desmodium rotundifolium</i>	5
<i>Desmodium sessilifolium</i>	6
<i>Desmodium strictum</i>	8
<i>Desmodium tenuifolium</i>	8
<i>Desmodium viridiflorum</i>	5
<i>Diamorpha smallii</i>	10
<i>Dianthus armeria</i> ssp. <i>armeria</i>	0
<i>Diarrhena americana</i>	7
<i>Diarrhena obovata</i>	5
<i>Dicentra canadensis</i>	7
<i>Dicentra cucullaria</i>	7
<i>Dicentra eximia</i>	7
<i>Dichanthelium aciculare</i>	6
<i>Dichanthelium acuminatum</i> var. <i>acuminatum</i>	4
<i>Dichanthelium acuminatum</i> var. <i>fasciculatum</i>	4
<i>Dichanthelium acuminatum</i> var. <i>lindheimeri</i>	5
<i>Dichanthelium angustifolium</i>	6
<i>Dichanthelium annulum</i>	7
<i>Dichanthelium boscii</i>	5
<i>Dichanthelium caerulescens</i>	7
<i>Dichanthelium clandestinum</i>	3
<i>Dichanthelium columbianum</i>	5

Taxon Name	C
<i>Dichanthelium commutatum</i> var. <i>ashei</i>	5
<i>Dichanthelium commutatum</i> var. <i>commutatum</i>	5
<i>Dichanthelium consanguineum</i>	7
<i>Dichanthelium cryptanthum</i>	8
<i>Dichanthelium depauperatum</i>	5
<i>Dichanthelium dichotomum</i> var. <i>dichotomum</i>	4
<i>Dichanthelium dichotomum</i> var. <i>nitidum</i>	7
<i>Dichanthelium dichotomum</i> var. <i>ramulosum</i>	5
<i>Dichanthelium dichotomum</i> var. <i>roanokense</i>	5
<i>Dichanthelium ensifolium</i>	7
<i>Dichanthelium fusiforme</i>	7
<i>Dichanthelium latifolium</i>	7
<i>Dichanthelium laxiflorum</i>	4
<i>Dichanthelium linearifolium</i>	6
<i>Dichanthelium longiligulatum</i>	7
<i>Dichanthelium lucidum</i>	7
<i>Dichanthelium mattamuskeetense</i>	7
<i>Dichanthelium meridionale</i>	5
<i>Dichanthelium oligosanthes</i> var. <i>oligosanthes</i>	6
<i>Dichanthelium oligosanthes</i> var. <i>scribnerianum</i>	6
<i>Dichanthelium ovale</i> var. <i>addisonii</i>	6
<i>Dichanthelium ovale</i> var. <i>ovale</i>	6
<i>Dichanthelium polyanthes</i>	5
<i>Dichanthelium portoricense</i> ssp. <i>patulum</i>	7
<i>Dichanthelium ravenelii</i>	7
<i>Dichanthelium scabriusculum</i>	6
<i>Dichanthelium scoparium</i>	4
<i>Dichanthelium sphaerocarpon</i>	4
<i>Dichanthelium spretum</i>	7
<i>Dichanthelium strigosum</i> var. <i>strigosum</i>	8
<i>Dichanthelium tenue</i>	6
<i>Dichanthelium villosissimum</i> var. <i>villosissimum</i>	6
<i>Dichanthelium wrightianum</i>	7
<i>Dichanthelium yadkinense</i>	6
<i>Dichondra carolinensis</i>	2
<i>Dicliptera brachiata</i>	6
<i>Didiplis diandra</i>	8
<i>Diervilla lonicera</i>	7

Taxon Name	C
<i>Digitaria ciliaris</i>	1
<i>Digitaria cognata</i>	4
<i>Digitaria filiformis</i> var. <i>filiformis</i>	3
<i>Digitaria ischaemum</i>	0
<i>Digitaria sanguinalis</i>	0
<i>Digitaria serotina</i>	6
<i>Digitaria texana</i>	0
<i>Digitaria villosa</i>	5
<i>Diodia teres</i>	1
<i>Diodia virginiana</i>	3
<i>Dioscorea polystachya</i>	-5
<i>Dioscorea villosa</i>	5
<i>Diospyros virginiana</i>	5
<i>Diphasiastrum digitatum</i>	4
<i>Diphasiastrum tristachyum</i>	7
<i>Diphylleia cymosa</i>	9
<i>Dipsacus fullonum</i>	-3
<i>Dipsacus laciniatus</i>	0
<i>Dirca palustris</i>	7
<i>Distichlis spicata</i>	8
<i>Doellingeria infirma</i>	7
<i>Doellingeria umbellata</i>	5
<i>Draba brachycarpa</i>	4
<i>Draba ramosissima</i>	7
<i>Draba verna</i>	0
<i>Drosera brevifolia</i>	8
<i>Drosera capillaris</i>	7
<i>Drosera intermedia</i>	8
<i>Drosera rotundifolia</i> var. <i>rotundifolia</i>	8
<i>Drymocallis arguta</i>	9
<i>Dryopteris campyloptera</i>	9
<i>Dryopteris carthusiana</i>	6
<i>Dryopteris celsa</i>	6
<i>Dryopteris clintoniana</i>	9
<i>Dryopteris cristata</i>	6
<i>Dryopteris goldiana</i>	8
<i>Dryopteris intermedia</i>	7
<i>Dryopteris marginalis</i>	4
<i>Dulichium arundinaceum</i> var. <i>arundinaceum</i>	6
<i>Dysphania ambrosioides</i>	0
<i>Dysphania pumilio</i>	0
<i>Echinacea laevigata</i>	9

Taxon Name	C
<i>Echinochloa colonum</i>	0
<i>Echinochloa crusgalli</i> var. <i>crusgalli</i>	0
<i>Echinochloa muricata</i> var. <i>microstachya</i>	2
<i>Echinochloa muricata</i> var. <i>muricata</i>	2
<i>Echinochloa walteri</i>	7
<i>Echinocystis lobata</i>	5
<i>Echinodorus cordifolius</i>	8
<i>Echinodorus tenellus</i>	10
<i>Echium vulgare</i>	0
<i>Eclipta prostrata</i>	2
<i>Egeria densa</i>	-3
<i>Eichhornia crassipes</i>	-5
<i>Elaeagnus angustifolia</i>	0
<i>Elaeagnus pungens</i>	-1
<i>Elaeagnus umbellata</i>	-5
<i>Elatine americana</i>	9
<i>Elatine minima</i>	9
<i>Eleocharis acicularis</i>	6
<i>Eleocharis albida</i>	7
<i>Eleocharis baldwinii</i>	6
<i>Eleocharis compressa</i> var. <i>compressa</i>	8
<i>Eleocharis elliptica</i>	8
<i>Eleocharis engelmannii</i>	4
<i>Eleocharis equisetoides</i>	8
<i>Eleocharis erythropoda</i>	6
<i>Eleocharis fallax</i>	7
<i>Eleocharis flavescens</i>	7
<i>Eleocharis intermedia</i>	7
<i>Eleocharis melanocarpa</i>	9
<i>Eleocharis microcarpa</i> var. <i>filiculmis</i>	5
<i>Eleocharis obtusa</i>	2
<i>Eleocharis olivacea</i> var. <i>olivacea</i>	6
<i>Eleocharis palustris</i>	8
<i>Eleocharis parvula</i>	7
<i>Eleocharis quadrangulata</i>	6
<i>Eleocharis radicans</i>	9
<i>Eleocharis robbinsii</i>	9
<i>Eleocharis rostellata</i>	8
<i>Eleocharis tenuis</i>	6
<i>Eleocharis tortilis</i>	7
<i>Eleocharis tricostata</i>	7
<i>Eleocharis tuberculosa</i>	5

Taxon Name	C
<i>Eleocharis uniglumis</i>	8
<i>Eleocharis vivipara</i>	8
<i>Eleocharis wolfii</i>	9
<i>Elephantopus carolinianus</i>	3
<i>Elephantopus nudatus</i>	4
<i>Elephantopus tomentosus</i>	4
<i>Eleusine indica</i>	0
<i>Ellisia nyctelea</i>	6
<i>Elodea canadensis</i>	5
<i>Elodea nuttallii</i>	7
<i>Elymus canadensis</i> var. <i>canadensis</i>	6
<i>Elymus glabriflorus</i>	4
<i>Elymus hystrix</i>	6
<i>Elymus macgregorii</i>	6
<i>Elymus repens</i>	0
<i>Elymus riparius</i>	5
<i>Elymus trachycaulus</i> ssp. <i>trachycaulus</i>	7
<i>Elymus villosus</i>	6
<i>Elymus virginicus</i>	4
<i>Endodeca serpentaria</i>	7
<i>Enemion biternatum</i>	8
<i>Epifagus virginiana</i>	7
<i>Epigaea repens</i>	7
<i>Epilobium ciliatum</i> ssp. <i>ciliatum</i>	7
<i>Epilobium coloratum</i>	4
<i>Epilobium leptophyllum</i>	9
<i>Epipactis helleborine</i>	0
<i>Equisetum arvense</i>	3
<i>Equisetum fluviatile</i>	9
<i>Equisetum hyemale</i> ssp. <i>affine</i>	5
<i>Equisetum sylvaticum</i>	9
<i>Eragrostis capillaris</i>	4
<i>Eragrostis cilianensis</i>	0
<i>Eragrostis curvula</i>	0
<i>Eragrostis frankii</i>	4
<i>Eragrostis hirsuta</i>	3
<i>Eragrostis hypnoides</i>	5
<i>Eragrostis minor</i>	0
<i>Eragrostis pectinacea</i> var. <i>pectinacea</i>	2
<i>Eragrostis pilosa</i> var. <i>pilosa</i>	0
<i>Eragrostis refracta</i>	4
<i>Eragrostis spectabilis</i>	4

Taxon Name	C
<i>Erechtites hieraciifolius</i>	2
<i>Eremochloa ophiuroides</i>	0
<i>Eriogenia bulbosa</i>	7
<i>Erigeron annuus</i>	2
<i>Erigeron philadelphicus</i> var. <i>philadelphicus</i>	3
<i>Erigeron pulchellus</i> var. <i>pulchellus</i>	6
<i>Erigeron quercifolius</i>	0
<i>Erigeron strigosus</i> var. <i>strigosus</i>	2
<i>Erigeron vernus</i>	8
<i>Eriocaulon aquaticum</i>	10
<i>Eriocaulon decangulare</i> var. <i>decangulare</i>	8
<i>Eriocaulon parkeri</i>	9
<i>Eriogonum allenii</i>	10
<i>Eriophorum virginicum</i>	8
<i>Erodium cicutarium</i>	0
<i>Eryngium aquaticum</i> var. <i>aquaticum</i>	8
<i>Eryngium integrifolium</i>	9
<i>Eryngium prostratum</i>	4
<i>Eryngium yuccifolium</i> var. <i>yuccifolium</i>	8
<i>Erysimum capitatum</i> var. <i>capitatum</i>	9
<i>Erysimum cheiranthoides</i>	0
<i>Erysimum repandum</i>	0
<i>Erythronium albidum</i>	8
<i>Erythronium americanum</i> ssp. <i>americanum</i>	6
<i>Erythronium umbilicatum</i> ssp. <i>umbilicatum</i>	6
<i>Eubotrys racemosus</i>	6
<i>Eubotrys recurvus</i>	8
<i>Euonymus alatus</i>	-5
<i>Euonymus americanus</i>	5
<i>Euonymus atropurpureus</i>	7
<i>Euonymus europaeus</i>	0
<i>Euonymus fortunei</i>	-3
<i>Eupatorium album</i> var. <i>album</i>	6
<i>Eupatorium altissimum</i>	4
<i>Eupatorium anomalum</i>	9
<i>Eupatorium capillifolium</i>	2
<i>Eupatorium cordigerum</i>	7
<i>Eupatorium godfreyanum</i>	5
<i>Eupatorium hyssopifolium</i>	4
<i>Eupatorium leucolepis</i>	7
<i>Eupatorium linearifolium</i>	9

Taxon Name	C
<i>Eupatorium mohrii</i>	6
<i>Eupatorium perfoliatum</i>	6
<i>Eupatorium pilosum</i>	6
<i>Eupatorium pubescens</i>	4
<i>Eupatorium rotundifolium</i>	4
<i>Eupatorium saltuense</i>	5
<i>Eupatorium semiserratum</i>	5
<i>Eupatorium serotinum</i>	2
<i>Eupatorium sessilifolium</i> var. <i>sessilifolium</i>	6
<i>Eupatorium torreyanum</i>	4
<i>Eupatorium vaseyi</i>	5
<i>Euphorbia bombensis</i>	9
<i>Euphorbia commutata</i>	6
<i>Euphorbia corollata</i>	4
<i>Euphorbia cyathophora</i>	0
<i>Euphorbia cyparissias</i>	0
<i>Euphorbia dentata</i>	0
<i>Euphorbia exserta</i>	9
<i>Euphorbia falcata</i>	0
<i>Euphorbia helioscopia</i>	0
<i>Euphorbia humistrata</i>	0
<i>Euphorbia ipecacuanhae</i>	7
<i>Euphorbia lathyris</i>	0
<i>Euphorbia maculata</i>	2
<i>Euphorbia marginata</i>	0
<i>Euphorbia nutans</i>	1
<i>Euphorbia polygonifolia</i>	7
<i>Euphorbia prostrata</i>	0
<i>Euphorbia pubentissima</i>	5
<i>Euphorbia purpurea</i>	8
<i>Euphorbia spathulata</i>	7
<i>Euphorbia vermiculata</i>	0
<i>Eurybia chlorolepis</i>	8
<i>Eurybia compacta</i>	6
<i>Eurybia divaricata</i>	5
<i>Eurybia macrophylla</i>	6
<i>Eurybia radula</i>	9
<i>Eurybia schreberi</i>	6
<i>Eurybia spectabilis</i>	6
<i>Eurybia surculosa</i>	8
<i>Euthamia caroliniana</i>	3
<i>Euthamia graminifolia</i>	4

Taxon Name	C
<i>Euthamia hirtipes</i>	8
<i>Eutrochium dubium</i>	5
<i>Eutrochium fistulosum</i>	4
<i>Eutrochium maculatum</i> var. <i>maculatum</i>	8
<i>Eutrochium purpureum</i> var. <i>purpureum</i>	5
<i>Eutrochium steelei</i>	6
<i>Fagopyrum esculentum</i>	0
<i>Fagus grandifolia</i>	5
<i>Fallopia cilinodis</i>	8
<i>Fallopia convolvulus</i>	0
<i>Fallopia cristata</i>	7
<i>Fallopia scandens</i>	2
<i>Fatoua villosa</i>	0
<i>Festuca filiformis</i>	0
<i>Festuca paradoxa</i>	6
<i>Festuca rubra</i>	4
<i>Festuca subverticillata</i>	5
<i>Festuca trachyphylla</i>	0
<i>Ficaria verna</i>	-5
<i>Filago vulgaris</i>	0
<i>Filipendula rubra</i>	9
<i>Fimbristylis annua</i>	0
<i>Fimbristylis autumnalis</i>	4
<i>Fimbristylis caroliniana</i>	8
<i>Fimbristylis castanea</i>	8
<i>Fimbristylis perpusilla</i>	10
<i>Fimbristylis puberula</i> var. <i>puberula</i>	9
<i>Fleischmannia incarnata</i>	7
<i>Floerkea proserpinacoides</i>	7
<i>Foeniculum vulgare</i>	0
<i>Forsythia suspensa</i>	0
<i>Forsythia viridissima</i>	0
<i>Fragaria vesca</i> var. <i>americana</i>	8
<i>Fragaria virginiana</i>	2
<i>Frangula alnus</i>	0
<i>Frangula caroliniana</i>	7
<i>Fraxinus americana</i>	7
<i>Fraxinus caroliniana</i>	8
<i>Fraxinus nigra</i>	8
<i>Fraxinus pennsylvanica</i>	6
<i>Fraxinus profunda</i>	7
<i>Fraxinus quadrangulata</i>	9

Taxon Name	C
<i>Froelichia gracilis</i>	2
<i>Fuirena breviseta</i>	9
<i>Fuirena pumila</i>	4
<i>Fuirena squarrosa</i>	3
<i>Fumaria officinalis</i>	0
<i>Galactia regularis</i>	6
<i>Galactia volubilis</i> var. <i>volubilis</i>	6
<i>Galax urceolata</i>	7
<i>Galearis spectabilis</i>	7
<i>Galeopsis bifida</i>	0
<i>Galinsoga parviflora</i> var. <i>parviflora</i>	0
<i>Galinsoga quadriradiata</i>	0
<i>Galium anglicum</i>	0
<i>Galium aparine</i>	2
<i>Galium asprellum</i>	7
<i>Galium boreale</i>	9
<i>Galium circaezans</i>	6
<i>Galium concinnum</i>	6
<i>Galium hispidulum</i>	8
<i>Galium lanceolatum</i>	6
<i>Galium latifolium</i>	6
<i>Galium mollugo</i>	0
<i>Galium obtusum</i>	5
<i>Galium orizabense</i> ssp. <i>laevicaule</i>	7
<i>Galium pedemontanum</i>	0
<i>Galium pilosum</i>	4
<i>Galium sherardia</i>	0
<i>Galium tinctorium</i>	4
<i>Galium triflorum</i>	5
<i>Galium uniflorum</i>	7
<i>Galium verum</i>	0
<i>Gamochaeta argyrinea</i>	2
<i>Gamochaeta calviceps</i>	2
<i>Gamochaeta coarctata</i>	0
<i>Gamochaeta pensylvanica</i>	0
<i>Gamochaeta purpurea</i>	2
<i>Gaultheria procumbens</i>	7
<i>Gaylussacia baccata</i>	5
<i>Gaylussacia brachycera</i>	8
<i>Gaylussacia dumosa</i>	6
<i>Gaylussacia frondosa</i>	5
<i>Gelsemium sempervirens</i>	4

Taxon Name	C
<i>Gentiana austromontana</i>	8
<i>Gentiana autumnalis</i>	9
<i>Gentiana catesbaei</i>	7
<i>Gentiana clausa</i>	7
<i>Gentiana decora</i>	7
<i>Gentiana saponaria</i>	6
<i>Gentiana villosa</i>	6
<i>Gentianella quinquefolia</i> var. <i>occidentalis</i>	8
<i>Gentianella quinquefolia</i> var. <i>quinquefolia</i>	7
<i>Gentianopsis crinita</i>	9
<i>Geranium carolinianum</i>	1
<i>Geranium columbinum</i>	0
<i>Geranium dissectum</i>	0
<i>Geranium maculatum</i>	7
<i>Geranium molle</i>	0
<i>Geranium pusillum</i>	0
<i>Geranium robertianum</i>	6
<i>Geum aleppicum</i>	8
<i>Geum canadense</i>	5
<i>Geum donianum</i>	7
<i>Geum fragarioides</i>	7
<i>Geum laciniatum</i>	8
<i>Geum vernum</i>	3
<i>Geum virginianum</i>	5
<i>Gillenia stipulata</i>	8
<i>Gillenia trifoliata</i>	7
<i>Glandularia canadensis</i>	0
<i>Glechoma hederacea</i>	-3
<i>Gleditsia triacanthos</i>	3
<i>Glyceria acutiflora</i>	8
<i>Glyceria canadensis</i>	7
<i>Glyceria grandis</i> var. <i>grandis</i>	8
<i>Glyceria laxa</i>	8
<i>Glyceria melicaria</i>	7
<i>Glyceria obtusa</i>	7
<i>Glyceria septentrionalis</i>	6
<i>Glyceria striata</i> var. <i>striata</i>	5
<i>Gnaphalium uliginosum</i>	5
<i>Gonolobus suberosus</i> var. <i>suberosus</i>	5
<i>Goodyera pubescens</i>	7
<i>Goodyera repens</i>	8
<i>Gratiola neglecta</i>	5

Taxon Name	C
Gratiola ramosa	7
Gratiola virginiana	5
Gratiola viscidula	7
Gymnocarpium appalachianum	9
Gymnocladus dioicus	6
Gymnopogon ambiguus	6
Gymnopogon brevifolius	6
Hackelia virginiana	4
Halesia tetraptera	7
Hamamelis virginiana var. virginiana	6
Harperella vivipara	9
Hedeoma pulegioides	4
Hedera helix	-3
Helenium amarum var. amarum	0
Helenium autumnale	4
Helenium brevifolium	8
Helenium flexuosum	4
Helenium virginicum	9
Helianthus angustifolius	6
Helianthus annuus	0
Helianthus atrorubens	6
Helianthus decapetalus	6
Helianthus divaricatus	6
Helianthus giganteus	6
Helianthus grosseserratus	0
Helianthus hirsutus	7
Helianthus laetiflorus	0
Helianthus laevigatus	7
Helianthus maximiliani	0
Helianthus microcephalus	6
Helianthus mollis	0
Helianthus occidentalis ssp. occidentalis	10
Helianthus strumosus	5
Helianthus tuberosus	0
Heliopsis helianthoides var. helianthoides	5
Heliotropium amplexicaule	0
Heliotropium curassavicum var. curassavicum	8
Heliotropium indicum	0
Helonias bullata	9
Hemerocallis fulva	0
Heracleum maximum	6
Hesperis matronalis	0

Taxon Name	C
Heteranthera dubia	5
Heteranthera multiflora	7
Heteranthera reniformis	5
Heterotheca camporum var. glandulissima	0
Heterotheca subaxillaris	3
Heuchera alba	9
Heuchera americana	6
Heuchera caroliniana	8
Heuchera hispida	7
Heuchera longiflora	8
Heuchera parviflora	9
Heuchera pubescens	7
Heuchera villosa var. villosa	7
Hexalectris spicata var. spicata	8
Hexastylis arifolia var. arifolia	7
Hexastylis arifolia var. ruthii	7
Hexastylis contracta	9
Hexastylis heterophylla	7
Hexastylis lewisii	8
Hexastylis minor	7
Hexastylis virginica	6
Hibiscus coccineus	0
Hibiscus laevis	8
Hibiscus moscheutos	5
Hibiscus syriacus	0
Hibiscus trionum	0
Hieracium aurantiacum	0
Hieracium caespitosum	0
Hieracium gronovii	4
Hieracium paniculatum	4
Hieracium pilosella	0
Hieracium piloselloides	0
Hieracium scabrum	4
Hieracium traillii	8
Hieracium venosum	6
Holcus lanatus	-3
Holosteum umbellatum ssp. umbellatum	0
Homalosorus pycnocarpus	7
Honckenya peploides ssp. robusta	9
Hordeum jubatum ssp. jubatum	2
Hordeum pusillum	2
Hottonia inflata	8

Taxon Name	C
<i>Houstonia caerulea</i>	3
<i>Houstonia canadensis</i>	9
<i>Houstonia longifolia</i>	6
<i>Houstonia nigricans</i> var. <i>nigricans</i>	9
<i>Houstonia purpurea</i> var. <i>purpurea</i>	6
<i>Houstonia pusilla</i>	2
<i>Houstonia serpyllifolia</i>	7
<i>Houstonia tenuifolia</i>	6
<i>Hudsonia tomentosa</i>	8
<i>Humulus japonicus</i>	-3
<i>Humulus lupulus</i>	2
<i>Huperzia appressa</i>	8
<i>Huperzia lucidula</i>	7
<i>Huperzia porophila</i>	9
<i>Hybanthus concolor</i>	7
<i>Hydaticea petiolaris</i>	9
<i>Hydrangea arborescens</i>	5
<i>Hydrastis canadensis</i>	8
<i>Hydrilla verticillata</i>	-5
<i>Hydrocotyle americana</i>	6
<i>Hydrocotyle bonariensis</i>	8
<i>Hydrocotyle prolifera</i>	6
<i>Hydrocotyle ranunculoides</i>	6
<i>Hydrocotyle sibthorpioides</i>	0
<i>Hydrocotyle umbellata</i>	5
<i>Hydrocotyle verticillata</i>	6
<i>Hydrolea quadrivalvis</i>	7
<i>Hydrophyllum canadense</i>	7
<i>Hydrophyllum macrophyllum</i>	7
<i>Hydrophyllum virginianum</i>	7
<i>Hylodesmum glutinosum</i>	7
<i>Hylodesmum nudiflorum</i>	5
<i>Hylodesmum pauciflorum</i>	7
<i>Hylotelephium erythrostictum</i>	0
<i>Hylotelephium telephioides</i>	8
<i>Hylotelephium telephium</i>	0
<i>Hypericum adpressum</i>	8
<i>Hypericum boreale</i>	9
<i>Hypericum canadense</i>	6
<i>Hypericum crux-andreae</i>	5
<i>Hypericum densiflorum</i>	5
<i>Hypericum denticulatum</i>	8

Taxon Name	C
<i>Hypericum drummondii</i>	5
<i>Hypericum ellipticum</i>	8
<i>Hypericum fraseri</i>	7
<i>Hypericum frondosum</i>	0
<i>Hypericum gentianoides</i>	3
<i>Hypericum gymnanthum</i>	7
<i>Hypericum hypericoides</i>	4
<i>Hypericum lloydii</i>	7
<i>Hypericum mitchellianum</i>	8
<i>Hypericum mutilum</i> var. <i>mutilum</i>	3
<i>Hypericum nudiflorum</i>	5
<i>Hypericum perforatum</i>	0
<i>Hypericum prolificum</i>	5
<i>Hypericum punctatum</i>	3
<i>Hypericum setosum</i>	8
<i>Hypericum stragulum</i>	5
<i>Hypericum tubulosum</i>	8
<i>Hypericum virgatum</i>	8
<i>Hypericum virginicum</i>	5
<i>Hypericum walteri</i>	6
<i>Hypochaeris radicata</i>	0
<i>Hypopitys monotropa</i>	7
<i>Hypoxis curtissii</i>	7
<i>Hypoxis hirsuta</i>	5
<i>Hypoxis sessilis</i>	9
<i>Hypoxis wrightii</i>	8
<i>Ilex collina</i>	9
<i>Ilex coriacea</i>	8
<i>Ilex crenata</i>	0
<i>Ilex decidua</i> var. <i>decidua</i>	6
<i>Ilex glabra</i>	7
<i>Ilex laevigata</i>	7
<i>Ilex montana</i>	7
<i>Ilex opaca</i> var. <i>opaca</i>	5
<i>Ilex verticillata</i>	7
<i>Ilex vomitoria</i>	7
<i>Iliamna corei</i>	10
<i>Iliamna remota</i>	6
<i>Impatiens capensis</i>	4
<i>Impatiens pallida</i>	7
<i>Inula helenium</i>	0
<i>Ionactis linariifolia</i>	7

Taxon Name	C
Ipomoea coccinea	1
Ipomoea hederacea	1
Ipomoea lacunosa	3
Ipomoea pandurata	3
Ipomoea purpurea	0
Iresine rhizomatosa	8
Iris cristata	7
Iris domestica	0
Iris prismatica	6
Iris pseudacorus	-5
Iris verna var. smalliana	6
Iris verna var. verna	6
Iris versicolor	8
Iris virginica	7
Isatis tinctoria	0
Isoetes appalachiana	8
Isoetes engelmannii	6
Isoetes hyemalis	8
Isoetes lacustris	9
Isoetes mattaponica	8
Isoetes melanopoda	7
Isoetes piedmontana	9
Isoetes riparia	8
Isoetes valida	5
Isoetes virginica	8
Isolepis carinata	7
Isotrema macrophyllum	7
Isotria medeoloides	7
Isotria verticillata	7
Itea virginica	7
Iva annua	0
Iva frutescens	7
Iva imbricata	8
Jeffersonia diphylla	8
Juglans cinerea	7
Juglans nigra	5
Juncus acuminatus	4
Juncus anhelatus	4
Juncus articulatus	5
Juncus balticus var. littoralis	9
Juncus biflorus	5
Juncus brachycarpus	7

Taxon Name	C
Juncus brachycephalus	7
Juncus brevicaudatus	7
Juncus bufonius	3
Juncus caesariensis	7
Juncus canadensis	5
Juncus coriaceus	5
Juncus debilis	5
Juncus dichotomus	4
Juncus diffusissimus	4
Juncus dudleyi	4
Juncus effusus	3
Juncus elliotii	7
Juncus gerardii	8
Juncus inflexus	0
Juncus longii	7
Juncus marginatus	5
Juncus megacephalus	8
Juncus nodosus	8
Juncus pelocarpus	8
Juncus repens	5
Juncus roemerianus	8
Juncus scirpoides var. compositus	6
Juncus scirpoides var. scirpoides	6
Juncus secundus	5
Juncus subcaudatus	6
Juncus tenuis	2
Juncus torreyi	8
Juncus trifidus	10
Juncus validus var. validus	4
Juniperus communis var. depressa	7
Juniperus virginiana var. virginiana	3
Justicia americana	7
Justicia ovata var. ovata	7
Kalmia angustifolia	8
Kalmia carolina	8
Kalmia latifolia	7
Kickxia elatine	0
Kosteletzkya pentacarpos	8
Krigia biflora var. biflora	6
Krigia cespitosa	4
Krigia dandelion	4
Krigia virginica	3

Taxon Name	C
<i>Kummerowia stipulacea</i>	0
<i>Kummerowia striata</i>	0
<i>Kyllinga gracillima</i>	0
<i>Kyllinga pumila</i>	2
<i>Lachnanthes caroliniana</i>	9
<i>Lachnocaulon anceps</i>	8
<i>Lactuca biennis</i>	5
<i>Lactuca canadensis</i>	2
<i>Lactuca floridana</i>	5
<i>Lactuca graminifolia</i> var. <i>graminifolia</i>	9
<i>Lactuca hirsuta</i>	5
<i>Lactuca saligna</i>	0
<i>Lactuca serriola</i>	0
<i>Lamium amplexicaule</i>	0
<i>Lamium galeobdolon</i>	0
<i>Lamium maculatum</i>	0
<i>Lamium purpureum</i>	0
<i>Landoltia punctata</i>	0
<i>Laporteia canadensis</i>	6
<i>Lapsana communis</i>	0
<i>Lathyrus hirsutus</i>	0
<i>Lathyrus latifolius</i>	0
<i>Lathyrus palustris</i>	9
<i>Lathyrus pusillus</i>	3
<i>Lathyrus venosus</i>	7
<i>Lechea intermedia</i> var. <i>intermedia</i>	7
<i>Lechea maritima</i> var. <i>virginica</i>	8
<i>Lechea minor</i>	7
<i>Lechea mucronata</i>	7
<i>Lechea pulchella</i> var. <i>pulchella</i>	6
<i>Lechea pulchella</i> var. <i>ramosissima</i>	6
<i>Lechea racemulosa</i>	5
<i>Lechea tenuifolia</i>	6
<i>Leersia hexandra</i>	9
<i>Leersia lenticularis</i>	7
<i>Leersia oryzoides</i>	4
<i>Leersia virginica</i>	4
<i>Lemna minor</i>	6
<i>Lemna perpusilla</i>	4
<i>Lemna trisulca</i>	8
<i>Lemna valdiviana</i>	5
<i>Leonurus cardiaca</i>	0

Taxon Name	C
<i>Lepidium campestre</i>	0
<i>Lepidium densiflorum</i>	0
<i>Lepidium didymum</i>	0
<i>Lepidium virginicum</i>	2
<i>Leptochloa fascicularis</i>	6
<i>Leptochloa panicea</i> ssp. <i>brachiata</i>	0
<i>Leptochloa panicoides</i>	0
<i>Lespedeza angustifolia</i>	6
<i>Lespedeza bicolor</i>	-1
<i>Lespedeza capitata</i>	5
<i>Lespedeza cuneata</i>	-5
<i>Lespedeza frutescens</i>	6
<i>Lespedeza hirta</i> var. <i>curtissii</i>	6
<i>Lespedeza hirta</i> var. <i>hirta</i>	6
<i>Lespedeza procumbens</i>	4
<i>Lespedeza repens</i>	5
<i>Lespedeza stuevei</i>	6
<i>Lespedeza violacea</i>	5
<i>Lespedeza virginica</i>	4
<i>Leucanthemum vulgare</i>	0
<i>Leucojum aestivum</i>	0
<i>Leucospora multifida</i>	0
<i>Leucothoe axillaris</i>	7
<i>Leucothoe fontanesiana</i>	8
<i>Liatris aspera</i>	9
<i>Liatris helleri</i>	9
<i>Liatris pilosa</i>	6
<i>Liatris scariosa</i> var. <i>scariosa</i>	7
<i>Liatris spicata</i> var. <i>resinosa</i>	8
<i>Liatris spicata</i> var. <i>spicata</i>	7
<i>Liatris squarrosa</i> var. <i>squarrosa</i>	6
<i>Liatris squarrulosa</i>	7
<i>Liatris virgata</i>	6
<i>Ligusticum canadense</i>	7
<i>Ligustrum japonicum</i>	0
<i>Ligustrum obtusifolium</i> var. <i>obtusifolium</i>	-3
<i>Ligustrum obtusifolium</i> var. <i>suave</i>	0
<i>Ligustrum ovalifolium</i>	0
<i>Ligustrum sinense</i>	-5
<i>Ligustrum vulgare</i>	0
<i>Lilaeopsis carolinensis</i>	8
<i>Lilaeopsis chinensis</i>	7

Taxon Name	C
<i>Lilium canadense</i>	6
<i>Lilium catesbaei</i>	9
<i>Lilium grayi</i>	8
<i>Lilium lancifolium</i>	0
<i>Lilium michauxii</i>	8
<i>Lilium philadelphicum</i>	7
<i>Lilium pyrophilum</i>	8
<i>Lilium superbum</i>	6
<i>Limnobiium spongia</i>	7
<i>Limonium carolinianum</i>	8
<i>Limosella australis</i>	9
<i>Linaria vulgaris</i>	0
<i>Lindera benzoin</i>	6
<i>Lindernia dubia</i> var. <i>anagallidea</i>	4
<i>Lindernia dubia</i> var. <i>dubia</i>	4
<i>Linum intercursum</i>	6
<i>Linum medium</i> var. <i>texanum</i>	5
<i>Linum striatum</i>	4
<i>Linum sulcatum</i>	8
<i>Linum usitatissimum</i>	0
<i>Linum virginianum</i>	6
<i>Liparis liliifolia</i>	6
<i>Liparis loeselii</i>	8
<i>Lipocarpha maculata</i>	7
<i>Lipocarpha micrantha</i>	7
<i>Liquidambar styraciflua</i>	3
<i>Liriodendron tulipifera</i>	4
<i>Listera australis</i>	7
<i>Listera smallii</i>	8
<i>Lithospermum canescens</i>	7
<i>Lithospermum caroliniense</i>	9
<i>Lithospermum latifolium</i>	8
<i>Lithospermum parviflorum</i>	6
<i>Lithospermum tuberosum</i>	8
<i>Lithospermum virginianum</i>	7
<i>Litsea aestivalis</i>	8
<i>Lobelia cardinalis</i>	7
<i>Lobelia elongata</i>	8
<i>Lobelia georgiana</i>	7
<i>Lobelia inflata</i>	2
<i>Lobelia nuttallii</i>	6
<i>Lobelia puberula</i>	4

Taxon Name	C
<i>Lobelia siphilitica</i> var. <i>siphilitica</i>	4
<i>Lobelia spicata</i> var. <i>leptostachys</i>	7
<i>Lobelia spicata</i> var. <i>scaposa</i>	5
<i>Lobelia spicata</i> var. <i>spicata</i>	6
<i>Lolium perenne</i> var. <i>aristatum</i>	0
<i>Lolium perenne</i> var. <i>perenne</i>	0
<i>Lolium temulentum</i>	0
<i>Lonicera canadensis</i>	8
<i>Lonicera dioica</i>	7
<i>Lonicera fragrantissima</i>	-1
<i>Lonicera japonica</i>	-5
<i>Lonicera maackii</i>	-5
<i>Lonicera morrowii</i>	-5
<i>Lonicera sempervirens</i>	4
<i>Lonicera tatarica</i>	-3
<i>Lonicera xylosteum</i>	0
<i>Lotus corniculatus</i>	0
<i>Ludwigia alata</i>	7
<i>Ludwigia alternifolia</i>	3
<i>Ludwigia brevipes</i>	7
<i>Ludwigia decurrens</i>	4
<i>Ludwigia glandulosa</i>	5
<i>Ludwigia grandiflora</i> ssp. <i>hexapetala</i>	-5
<i>Ludwigia hirtella</i>	8
<i>Ludwigia leptocarpa</i>	6
<i>Ludwigia linearis</i>	7
<i>Ludwigia palustris</i>	2
<i>Ludwigia peploides</i> var. <i>glabrescens</i>	0
<i>Ludwigia pilosa</i>	7
<i>Ludwigia ravenii</i>	7
<i>Ludwigia sphaerocarpa</i>	6
<i>Ludwigia virgata</i>	8
<i>Lunaria annua</i>	0
<i>Lupinus perennis</i>	7
<i>Luzula acuminata</i>	7
<i>Luzula bulbosa</i>	6
<i>Luzula echinata</i>	7
<i>Luzula multiflora</i> var. <i>multiflora</i>	6
<i>Lycium barbarum</i>	0
<i>Lycopodiella alopecuroides</i>	6
<i>Lycopodiella appressa</i>	7
<i>Lycopodiella inundata</i>	8

Taxon Name	C
<i>Lycopodioides apodum</i>	6
<i>Lycopodium clavatum</i>	7
<i>Lycopus americanus</i>	4
<i>Lycopus angustifolius</i>	6
<i>Lycopus europaeus</i>	0
<i>Lycopus rubellus</i>	6
<i>Lycopus uniflorus</i>	7
<i>Lycopus virginicus</i>	4
<i>Lygodium palmatum</i>	7
<i>Lyonia ligustrina</i> var. <i>foliosiflora</i>	8
<i>Lyonia ligustrina</i> var. <i>ligustrina</i>	6
<i>Lyonia lucida</i>	7
<i>Lyonia mariana</i>	6
<i>Lysimachia ciliata</i>	5
<i>Lysimachia hybrida</i>	8
<i>Lysimachia lanceolata</i>	5
<i>Lysimachia nummularia</i>	-3
<i>Lysimachia quadriflora</i>	9
<i>Lysimachia quadrifolia</i>	5
<i>Lysimachia radicans</i>	8
<i>Lysimachia terrestris</i>	7
<i>Lysimachia tonsa</i>	7
<i>Lysimachia vulgaris</i>	0
<i>Lythrum alatum</i>	8
<i>Lythrum lanceolatum</i>	7
<i>Lythrum lineare</i>	7
<i>Lythrum salicaria</i>	-5
<i>Maclura pomifera</i>	0
<i>Magnolia acuminata</i>	7
<i>Magnolia fraseri</i>	7
<i>Magnolia grandiflora</i>	0
<i>Magnolia macrophylla</i>	7
<i>Magnolia tripetala</i>	7
<i>Magnolia virginiana</i>	6
<i>Maianthemum canadense</i>	7
<i>Maianthemum racemosum</i> ssp. <i>racemosum</i>	6
<i>Maianthemum stellatum</i>	8
<i>Malaxis bayardii</i>	8
<i>Malaxis spicata</i>	8
<i>Malaxis unifolia</i>	7
<i>Malus angustifolia</i>	3
<i>Malus baccata</i>	0

Taxon Name	C
<i>Malus coronaria</i>	4
<i>Malus pumila</i>	0
<i>Malva moschata</i>	0
<i>Malva neglecta</i>	0
<i>Malva sylvestris</i>	0
<i>Malvastrum angustum</i>	9
<i>Manfreda virginica</i>	9
<i>Marrubium vulgare</i>	0
<i>Marshallia legrandii</i>	9
<i>Marshallia obovata</i> var. <i>obovata</i>	8
<i>Marsilea mutica</i>	0
<i>Matelea carolinensis</i>	6
<i>Matelea decipiens</i>	8
<i>Matelea obliqua</i>	7
<i>Matricaria discoidea</i>	0
<i>Matteuccia struthiopteris</i> var. <i>pennsylvanica</i>	7
<i>Mazus pumilus</i>	0
<i>Mecardonia acuminata</i> var. <i>acuminata</i>	5
<i>Medeola virginiana</i>	6
<i>Medicago lupulina</i>	0
<i>Medicago minima</i>	0
<i>Medicago sativa</i>	0
<i>Meehanian cordata</i>	8
<i>Melampyrum lineare</i> var. <i>americanum</i>	7
<i>Melampyrum lineare</i> var. <i>latifolium</i>	7
<i>Melampyrum lineare</i> var. <i>pectinatum</i>	7
<i>Melia azedarach</i>	-1
<i>Melica mutica</i>	6
<i>Melica nitens</i>	9
<i>Melilotus albus</i>	0
<i>Melilotus officinalis</i>	0
<i>Melissa officinalis</i>	0
<i>Melothria pendula</i>	4
<i>Menispermum canadense</i>	5
<i>Mentha aquatica</i> var. <i>aquatica</i>	0
<i>Mentha canadensis</i>	4
<i>Mentha gracilis</i>	0
<i>Mentha piperita</i>	0
<i>Mentha rotundifolia</i>	0
<i>Mentha spicata</i>	0
<i>Menyanthes trifoliata</i>	10
<i>Menziesia pilosa</i>	7

Taxon Name	C
<i>Mertensia virginica</i>	7
<i>Micranthemum micranthemoides</i>	10
<i>Micranthemum umbrosum</i>	8
<i>Micranthes careyana</i>	9
<i>Micranthes caroliniana</i>	8
<i>Micranthes micranthidifolia</i>	7
<i>Micranthes pensylvanica</i>	8
<i>Micranthes virginensis</i>	6
<i>Microstegium vimineum</i>	-5
<i>Microthlaspi perfoliatum</i>	0
<i>Mikania scandens</i>	3
<i>Milium effusum</i> var. <i>cisatlanticum</i>	8
<i>Mimosa microphylla</i>	8
<i>Mimulus alatus</i>	5
<i>Mimulus moschatus</i>	0
<i>Mimulus ringens</i> var. <i>ringens</i>	5
<i>Minuartia caroliniana</i>	10
<i>Minuartia glabra</i>	8
<i>Minuartia groenlandica</i>	10
<i>Minuartia michauxii</i> var. <i>michauxii</i>	8
<i>Minuartia patula</i>	9
<i>Mirabilis jalapa</i>	0
<i>Mirabilis nyctaginea</i>	0
<i>Miscanthus sinensis</i>	-3
<i>Mitchella repens</i>	5
<i>Mitella diphylla</i>	7
<i>Mitreola petiolata</i>	7
<i>Mitreola sessilifolia</i>	9
<i>Modiola caroliniana</i>	0
<i>Moehringia lateriflora</i>	9
<i>Mollugo verticillata</i>	0
<i>Monarda clinopodia</i>	7
<i>Monarda didyma</i>	7
<i>Monarda fistulosa</i> var. <i>brevis</i>	9
<i>Monarda fistulosa</i> var. <i>fistulosa</i>	5
<i>Monarda media</i>	5
<i>Monarda punctata</i> var. <i>punctata</i>	5
<i>Monotropa uniflora</i>	5
<i>Monotropis odorata</i>	7
<i>Morella caroliniensis</i>	7
<i>Morella cerifera</i>	4
<i>Morella pensylvanica</i>	8

Taxon Name	C
<i>Morella pumila</i>	8
<i>Morus alba</i>	-1
<i>Morus rubra</i>	4
<i>Mosla dianthera</i>	0
<i>Muhlenbergia bushii</i>	7
<i>Muhlenbergia capillaris</i>	7
<i>Muhlenbergia cuspidata</i>	10
<i>Muhlenbergia expansa</i>	9
<i>Muhlenbergia frondosa</i>	5
<i>Muhlenbergia glabriflora</i>	7
<i>Muhlenbergia glomerata</i>	9
<i>Muhlenbergia mexicana</i>	5
<i>Muhlenbergia schreberi</i>	1
<i>Muhlenbergia sobolifera</i>	7
<i>Muhlenbergia sylvatica</i>	6
<i>Muhlenbergia tenuiflora</i>	6
<i>Murdannia keisak</i>	-5
<i>Muscari botryoides</i>	0
<i>Muscari neglectum</i>	0
<i>Myosotis arvensis</i>	0
<i>Myosotis discolor</i>	0
<i>Myosotis laxa</i> ssp. <i>laxa</i>	6
<i>Myosotis macrosperma</i>	6
<i>Myosotis scorpioides</i>	0
<i>Myosotis stricta</i>	0
<i>Myosotis verna</i>	5
<i>Myosoton aquaticum</i>	0
<i>Myosurus minimus</i>	0
<i>Myriophyllum aquaticum</i>	-5
<i>Myriophyllum heterophyllum</i>	5
<i>Myriophyllum humile</i>	4
<i>Myriophyllum laxum</i>	8
<i>Myriophyllum pinnatum</i>	5
<i>Myriophyllum spicatum</i>	-5
<i>Nabalus albus</i>	7
<i>Nabalus altissimus</i>	6
<i>Nabalus autumnalis</i>	8
<i>Nabalus roanensis</i>	8
<i>Nabalus serpentarius</i>	6
<i>Nabalus trifoliolatus</i>	6
<i>Najas flexilis</i>	7
<i>Najas gracillima</i>	7

Taxon Name	C
<i>Najas guadalupensis</i> var. <i>guadalupensis</i>	6
<i>Najas minor</i>	-3
<i>Nandina domestica</i>	0
<i>Napaea dioica</i>	5
<i>Narcissus poeticus</i>	0
<i>Narcissus pseudonarcissus</i>	0
<i>Nasturtium officinale</i>	0
<i>Neillia incisa</i>	0
<i>Nelumbo lutea</i>	7
<i>Nemophila aphylla</i>	6
<i>Nepeta cataria</i>	0
<i>Nestronia umbellula</i>	7
<i>Nicandra physalodes</i>	0
<i>Nothoscordum bivalve</i>	2
<i>Nuphar advena</i>	7
<i>Nuphar sagittifolia</i>	8
<i>Nuttallanthus canadensis</i>	2
<i>Nuttallanthus texanus</i>	0
<i>Nymphaea odorata</i> ssp. <i>odorata</i>	6
<i>Nymphoides aquatica</i>	8
<i>Nymphoides peltata</i>	0
<i>Nyssa aquatica</i>	8
<i>Nyssa biflora</i>	6
<i>Nyssa sylvatica</i>	5
<i>Obolaria virginica</i>	7
<i>Oclemena acuminata</i>	7
<i>Oenanthe javanica</i>	0
<i>Oenothera argillicola</i>	9
<i>Oenothera biennis</i>	1
<i>Oenothera fruticosa</i>	5
<i>Oenothera gaura</i>	3
<i>Oenothera humifusa</i>	8
<i>Oenothera laciniata</i>	3
<i>Oenothera linifolia</i>	0
<i>Oenothera perennis</i>	5
<i>Oenothera pilosella</i>	3
<i>Oenothera riparia</i>	9
<i>Oenothera speciosa</i>	0
<i>Oenothera tetragona</i>	5
<i>Oldenlandia boschii</i>	7
<i>Oldenlandia uniflora</i>	6
<i>Onoclea sensibilis</i> var. <i>sensibilis</i>	4

Taxon Name	C
<i>Ophioglossum engelmannii</i>	8
<i>Ophioglossum petiolatum</i>	0
<i>Ophioglossum pusillum</i>	9
<i>Ophioglossum pycnostichum</i>	6
<i>Oplismenus hirtellus</i> ssp. <i>undulatifolius</i>	-5
<i>Opuntia humifusa</i> var. <i>humifusa</i>	7
<i>Orbexilum onobrychis</i>	9
<i>Orbexilum pedunculatum</i> var. <i>psoralioides</i>	7
<i>Ornithogalum nutans</i>	0
<i>Ornithogalum umbellatum</i>	0
<i>Orobanche minor</i>	0
<i>Orobanche ramosa</i>	0
<i>Orobanche riparia</i>	7
<i>Orobanche uniflora</i>	7
<i>Orontium aquaticum</i>	8
<i>Orthilia secunda</i>	8
<i>Orychophragmus violaceus</i>	0
<i>Oryzopsis asperifolia</i>	9
<i>Osmanthus americanus</i>	8
<i>Osmorhiza claytonii</i>	5
<i>Osmorhiza longistylis</i>	5
<i>Osmunda claytoniana</i> var. <i>claytoniana</i>	8
<i>Osmunda spectabilis</i>	6
<i>Osmundastrum cinnamomeum</i>	6
<i>Ostrya virginiana</i>	6
<i>Oxalis corniculata</i>	0
<i>Oxalis dillenii</i>	2
<i>Oxalis florida</i>	3
<i>Oxalis grandis</i>	7
<i>Oxalis montana</i>	8
<i>Oxalis rubra</i>	0
<i>Oxalis stricta</i>	2
<i>Oxalis violacea</i>	5
<i>Oxydendrum arboreum</i>	5
<i>Oxypolis rigidior</i>	6
<i>Oxypolis ternata</i>	9
<i>Packera anonyma</i>	4
<i>Packera antennariifolia</i>	9
<i>Packera aurea</i>	5
<i>Packera millefolium</i>	9
<i>Packera obovata</i>	7
<i>Packera paupercula</i> var. <i>appalachiana</i>	8

Taxon Name	C
Packera paupercula var. paupercula	7
Packera tomentosa	4
Panax quinquefolius	7
Panax trifolius	7
Panicum amarum var. amarulum	8
Panicum amarum var. amarum	7
Panicum capillare	3
Panicum dichotomiflorum var. dichotomiflorum	2
Panicum flexile	7
Panicum gattingeri	3
Panicum hemitomon	8
Panicum philadelphicum	5
Panicum verrucosum	5
Panicum virgatum var. cubense	6
Panicum virgatum var. virgatum	4
Papaver dubium	0
Parathelypteris noveboracensis	5
Parathelypteris simulata	8
Parietaria pensylvanica	4
Parnassia asarifolia	8
Parnassia grandifolia	9
Paronychia argyrocoma	9
Paronychia baldwinii ssp. riparia	8
Paronychia canadensis	7
Paronychia fastigiata	7
Paronychia montana	8
Paronychia virginica var. virginica	9
Parthenium auriculatum	8
Parthenium integrifolium var. integrifolium	6
Parthenium integrifolium var. mabryanum	8
Parthenocissus quinquefolia	3
Paspalum bifidum	9
Paspalum boscianum	4
Paspalum dilatatum	0
Paspalum dissectum	6
Paspalum distichum	6
Paspalum floridanum	4
Paspalum fluitans	6
Paspalum laeve	3
Paspalum notatum	0
Paspalum praecox	9

Taxon Name	C
Paspalum pubiflorum	5
Paspalum setaceum	4
Paspalum urvillei	0
Passiflora incarnata	2
Passiflora lutea	5
Pastinaca sativa	0
Patis racemosa	8
Paulownia tomentosa	-3
Paxistima canbyi	9
Pedicularis canadensis	6
Pedicularis lanceolata	8
Pediomelum canescens	9
Pellaea atropurpurea	8
Pellaea glabella ssp. glabella	9
Peltandra virginica	7
Pennisetum glaucum	0
Penstemon australis	7
Penstemon calycosus	9
Penstemon canescens	6
Penstemon digitalis	3
Penstemon hirsutus	6
Penstemon laevigatus	4
Penstemon pallidus	7
Penthorum sedoides	3
Perilla frutescens	-1
Persea palustris	7
Persicaria amphibia	6
Persicaria arifolia	6
Persicaria glabra	4
Persicaria hydropiper	4
Persicaria hydropiperoides	4
Persicaria lapathifolia	4
Persicaria longiseta	-3
Persicaria maculosa	0
Persicaria orientalis	0
Persicaria pensylvanica	2
Persicaria perfoliata	-5
Persicaria punctata	4
Persicaria sagittata	5
Persicaria setacea	4
Persicaria virginiana	5
Petrorhagia prolifera	0

Taxon Name	C
<i>Phacelia bipinnatifida</i>	7
<i>Phacelia covillei</i>	8
<i>Phacelia dubia</i> var. <i>dubia</i>	6
<i>Phacelia fimbriata</i>	8
<i>Phacelia purshii</i>	6
<i>Phalaris arundinacea</i>	1
<i>Phalaris canariensis</i>	0
<i>Phalaris caroliniana</i>	9
<i>Phanopyrum gymnocarpon</i>	8
<i>Phaseolus polystachios</i>	7
<i>Phegopteris hexagonoptera</i>	7
<i>Phemeranthus piedmontanus</i>	10
<i>Phemeranthus teretifolius</i>	9
<i>Philadelphus coronarius</i>	0
<i>Philadelphus hirsutus</i>	8
<i>Philadelphus inodorus</i>	5
<i>Phleum pratense</i>	-1
<i>Phlox amplifolia</i>	7
<i>Phlox buckleyi</i>	8
<i>Phlox carolina</i>	6
<i>Phlox divaricata</i>	7
<i>Phlox drummondii</i>	0
<i>Phlox glaberrima</i>	6
<i>Phlox maculata</i>	7
<i>Phlox nivalis</i>	7
<i>Phlox ovata</i>	6
<i>Phlox paniculata</i>	4
<i>Phlox pilosa</i>	7
<i>Phlox stolonifera</i>	7
<i>Phlox subulata</i>	8
<i>Phoradendron leucarpum</i> ssp. <i>leucarpum</i>	8
<i>Phragmites australis</i> ssp. <i>americanus</i>	7
<i>Phragmites australis</i> ssp. <i>australis</i>	-5
<i>Phryma leptostachya</i> var. <i>leptostachya</i>	6
<i>Phyla lanceolata</i>	4
<i>Phyla nodiflora</i>	8
<i>Phyllanthus caroliniensis</i> ssp. <i>caroliniensis</i>	2
<i>Phyllostachys aurea</i>	-3
<i>Physalis angulata</i> var. <i>angulata</i>	2
<i>Physalis grisea</i>	3
<i>Physalis heterophylla</i>	4
<i>Physalis longifolia</i> var. <i>subglabrata</i>	2

Taxon Name	C
<i>Physalis pubescens</i>	3
<i>Physalis virginiana</i> var. <i>virginiana</i>	3
<i>Physalis walteri</i>	9
<i>Physocarpus opulifolius</i> var. <i>opulifolius</i>	5
<i>Physostegia leptophylla</i>	7
<i>Physostegia virginiana</i> ssp. <i>praemorsa</i>	7
<i>Physostegia virginiana</i> ssp. <i>virginiana</i>	6
<i>Phytolacca americana</i> var. <i>americana</i>	1
<i>Phytolacca americana</i> var. <i>rigida</i>	7
<i>Picea rubens</i>	8
<i>Pieris floribunda</i>	7
<i>Pilea fontana</i>	7
<i>Pilea pumila</i>	4
<i>Pimpinella saxifraga</i> ssp. <i>saxifraga</i>	0
<i>Pinus echinata</i>	6
<i>Pinus palustris</i>	9
<i>Pinus pungens</i>	8
<i>Pinus rigida</i>	5
<i>Pinus serotina</i>	7
<i>Pinus strobus</i>	5
<i>Pinus taeda</i>	3
<i>Pinus virginiana</i>	2
<i>Piptochaetium avenaceum</i>	7
<i>Pistia stratiotes</i>	0
<i>Pityopsis aspera</i> var. <i>adenolepis</i>	5
<i>Pityopsis graminifolia</i> var. <i>latifolia</i>	6
<i>Planodes virginicum</i>	2
<i>Plantago aristata</i>	0
<i>Plantago cordata</i>	10
<i>Plantago heterophylla</i>	2
<i>Plantago lanceolata</i>	0
<i>Plantago major</i>	0
<i>Plantago maritima</i> var. <i>juncoides</i>	10
<i>Plantago pusilla</i>	0
<i>Plantago rugelii</i>	1
<i>Plantago virginica</i>	2
<i>Plantago wrightiana</i>	0
<i>Platanthera blephariglottis</i>	9
<i>Platanthera ciliaris</i>	6
<i>Platanthera clavellata</i>	7
<i>Platanthera cristata</i>	7
<i>Platanthera flava</i> var. <i>flava</i>	7

Taxon Name	C
<i>Platanthera flava</i> var. <i>herbiola</i>	7
<i>Platanthera grandiflora</i>	8
<i>Platanthera lacera</i>	7
<i>Platanthera leucophaea</i>	9
<i>Platanthera orbiculata</i>	7
<i>Platanthera peramoena</i>	7
<i>Platanthera psychodes</i>	8
<i>Platanthera shriveri</i>	9
<i>Platanus occidentalis</i>	5
<i>Pleopeltis polypodioides</i> ssp. <i>michauxiana</i>	8
<i>Pluchea camphorata</i>	5
<i>Pluchea foetida</i> var. <i>foetida</i>	5
<i>Pluchea odorata</i>	7
<i>Poa alsodes</i>	7
<i>Poa annua</i>	0
<i>Poa autumnalis</i>	5
<i>Poa bulbosa</i> ssp. <i>vivipara</i>	0
<i>Poa chapmaniana</i>	2
<i>Poa compressa</i>	-3
<i>Poa cuspidata</i>	6
<i>Poa languida</i>	9
<i>Poa paludigena</i>	9
<i>Poa palustris</i>	8
<i>Poa pratensis</i> ssp. <i>pratensis</i>	0
<i>Poa saltuensis</i>	8
<i>Poa sylvestris</i>	5
<i>Poa trivialis</i>	-3
<i>Podophyllum peltatum</i>	6
<i>Podostemum ceratophyllum</i>	8
<i>Pogonia ophioglossoides</i>	9
<i>Polanisia dodecandra</i> var. <i>dodecandra</i>	9
<i>Polemonium reptans</i> var. <i>reptans</i>	8
<i>Polygala cruciata</i>	8
<i>Polygala curtissii</i>	5
<i>Polygala incarnata</i>	5
<i>Polygala lutea</i>	5
<i>Polygala mariana</i>	6
<i>Polygala nuttallii</i>	6
<i>Polygala paucifolia</i>	8
<i>Polygala polygama</i>	6
<i>Polygala ramosa</i>	9
<i>Polygala sanguinea</i>	6

Taxon Name	C
<i>Polygala senega</i>	7
<i>Polygala verticillata</i>	4
<i>Polygonatum biflorum</i> var. <i>biflorum</i>	6
<i>Polygonatum biflorum</i> var. <i>commutatum</i>	6
<i>Polygonatum pubescens</i>	7
<i>Polygonella articulata</i>	7
<i>Polygonella polygama</i> var. <i>polygama</i>	9
<i>Polygonum aviculare</i>	0
<i>Polygonum erectum</i>	2
<i>Polygonum glaucum</i>	9
<i>Polygonum ramosissimum</i>	7
<i>Polygonum tenue</i>	7
<i>Polymnia canadensis</i>	6
<i>Polypodium appalachianum</i>	8
<i>Polypodium virginianum</i>	8
<i>Polypogon monspeliensis</i>	0
<i>Polypremum procumbens</i>	2
<i>Polystichum acrostichoides</i>	4
<i>Pontederia cordata</i> var. <i>cordata</i>	8
<i>Ponthieva racemosa</i>	8
<i>Populus alba</i>	-1
<i>Populus deltoides</i> var. <i>deltoides</i>	5
<i>Populus grandidentata</i>	3
<i>Populus heterophylla</i>	8
<i>Populus tremuloides</i>	6
<i>Portulaca amilis</i>	0
<i>Portulaca oleracea</i>	0
<i>Portulaca smallii</i>	10
<i>Potamogeton amplifolius</i>	7
<i>Potamogeton bicupulatus</i>	10
<i>Potamogeton crispus</i>	0
<i>Potamogeton diversifolius</i>	5
<i>Potamogeton epihydrus</i>	7
<i>Potamogeton foliosus</i> var. <i>foliosus</i>	5
<i>Potamogeton hillii</i>	9
<i>Potamogeton illinoensis</i>	6
<i>Potamogeton nodosus</i>	6
<i>Potamogeton oakesianus</i>	9
<i>Potamogeton perfoliatus</i>	8
<i>Potamogeton pulcher</i>	6
<i>Potamogeton pusillus</i> var. <i>pusillus</i>	6
<i>Potamogeton pusillus</i> var. <i>tenuissimus</i>	6

Taxon Name	C
Potamogeton robbinsii	9
Potamogeton spirillus	9
Potamogeton strictifolius	9
Potamogeton tennesseensis	9
Potamogeton zosteriformis	9
Potentilla argentea	0
Potentilla canadensis var. canadensis	4
Potentilla indica	0
Potentilla intermedia	0
Potentilla norvegica	3
Potentilla recta	0
Potentilla simplex	4
Primula meadia	8
Prosartes lanuginosa	7
Prosartes maculata	8
Proserpinaca palustris	6
Proserpinaca pectinata	6
Prunella vulgaris	2
Prunus alleghaniensis var. alleghaniensis	8
Prunus americana	3
Prunus angustifolia	4
Prunus avium	0
Prunus cerasus	0
Prunus hortulana	0
Prunus mahaleb	0
Prunus maritima	0
Prunus munsoniana	0
Prunus nigra	4
Prunus pensylvanica	6
Prunus persica	0
Prunus serotina var. serotina	3
Prunus subhirtella	0
Prunus susquehanae	8
Prunus virginiana var. virginiana	6
Pseudognaphalium helleri	5
Pseudognaphalium macounii	5
Pseudognaphalium micradenium	5
Pseudognaphalium obtusifolium	2
Pseudognaphalium stramineum	0
Pseudolycopodiella caroliniana	9
Ptelea trifoliata	6
Pteridium aquilinum ssp. latiusculum	4

Taxon Name	C
Pteridium aquilinum ssp. pseudocaudatum	3
Ptilimnium capillaceum	4
Puccinellia fasciculata	0
Pueraria montana var. lobata	-5
Pycnanthemum beadleii	7
Pycnanthemum clinopodioides	7
Pycnanthemum flexuosum	7
Pycnanthemum incanum var. incanum	6
Pycnanthemum loomisii	6
Pycnanthemum muticum	6
Pycnanthemum pycnanthemoides var. pycnanthemoides	6
Pycnanthemum setosum	7
Pycnanthemum tenuifolium	5
Pycnanthemum torreyi	7
Pycnanthemum verticillatum var. verticillatum	6
Pycnanthemum virginianum	8
Pyrola americana	6
Pyrola chlorantha	8
Pyrola elliptica	7
Pyrrhopappus carolinianus	2
Pyrolaria pubera	7
Pyrus calleryana	-3
Pyrus communis	0
Pyrus pyrifolia	0
Pyxidanthera barbulata var. barbulata	9
Quercus acutissima	0
Quercus alba	5
Quercus bicolor	7
Quercus coccinea	5
Quercus falcata	5
Quercus hemisphaerica	8
Quercus ilicifolia	8
Quercus imbricaria	7
Quercus incana	8
Quercus laevis	8
Quercus laurifolia	7
Quercus lyrata	8
Quercus macrocarpa	9
Quercus margarettae	8
Quercus marilandica var. marilandica	6
Quercus michauxii	6

Taxon Name	C
<i>Quercus montana</i>	6
<i>Quercus muehlenbergii</i>	8
<i>Quercus nigra</i>	4
<i>Quercus pagoda</i>	7
<i>Quercus palustris</i>	6
<i>Quercus phellos</i>	4
<i>Quercus prinoides</i>	8
<i>Quercus rubra</i>	6
<i>Quercus shumardii</i>	8
<i>Quercus stellata</i>	6
<i>Quercus velutina</i>	5
<i>Quercus virginiana</i>	7
<i>Ranunculus abortivus</i>	2
<i>Ranunculus acris</i>	0
<i>Ranunculus allegheniensis</i>	6
<i>Ranunculus ambigens</i>	7
<i>Ranunculus bulbosus</i>	0
<i>Ranunculus caricetorum</i>	6
<i>Ranunculus carolinianus</i>	6
<i>Ranunculus fascicularis</i>	7
<i>Ranunculus flabellaris</i>	7
<i>Ranunculus hederaceus</i>	7
<i>Ranunculus hispidus</i>	6
<i>Ranunculus laxicaulis</i>	8
<i>Ranunculus longirostris</i>	8
<i>Ranunculus micranthus</i>	6
<i>Ranunculus parviflorus</i>	0
<i>Ranunculus pusillus</i>	4
<i>Ranunculus recurvatus</i> var. <i>recurvatus</i>	6
<i>Ranunculus repens</i>	0
<i>Ranunculus sardous</i>	0
<i>Ranunculus sceleratus</i> var. <i>sceleratus</i>	4
<i>Raphanus raphanistrum</i>	0
<i>Reynoutria japonica</i>	-5
<i>Reynoutria sachalinensis</i>	0
<i>Rhamnus alnifolia</i>	9
<i>Rhamnus davurica</i>	0
<i>Rhamnus lanceolata</i> var. <i>glabrata</i>	9
<i>Rhamnus lanceolata</i> var. <i>lanceolata</i>	9
<i>Rhexia mariana</i> var. <i>mariana</i>	4
<i>Rhexia nashii</i>	6
<i>Rhexia petiolata</i>	8

Taxon Name	C
<i>Rhexia ventricosa</i>	6
<i>Rhexia virginica</i>	5
<i>Rhododendron arborescens</i>	8
<i>Rhododendron atlanticum</i>	6
<i>Rhododendron calendulaceum</i>	7
<i>Rhododendron catawbiense</i>	7
<i>Rhododendron cumberlandense</i>	7
<i>Rhododendron maximum</i>	7
<i>Rhododendron periclymenoides</i>	6
<i>Rhododendron prinophyllum</i>	7
<i>Rhododendron viscosum</i>	7
<i>Rhodotypos scandens</i>	-3
<i>Rhus aromatica</i> var. <i>aromatica</i>	7
<i>Rhus copallinum</i> var. <i>copallinum</i>	2
<i>Rhus copallinum</i> var. <i>latifolia</i>	3
<i>Rhus glabra</i>	3
<i>Rhus michauxii</i>	4
<i>Rhus typhina</i>	3
<i>Rhynchosia difformis</i>	7
<i>Rhynchosia tomentosa</i>	6
<i>Rhynchospora alba</i>	8
<i>Rhynchospora caduca</i>	7
<i>Rhynchospora capillacea</i>	9
<i>Rhynchospora capitellata</i>	6
<i>Rhynchospora cephalantha</i> var. <i>attenuata</i>	8
<i>Rhynchospora cephalantha</i> var. <i>cephalantha</i>	7
<i>Rhynchospora chalarocephala</i>	5
<i>Rhynchospora colorata</i>	8
<i>Rhynchospora corniculata</i>	4
<i>Rhynchospora debilis</i>	8
<i>Rhynchospora distans</i>	9
<i>Rhynchospora fascicularis</i>	8
<i>Rhynchospora filifolia</i>	9
<i>Rhynchospora globularis</i>	6
<i>Rhynchospora glomerata</i> var. <i>glomerata</i>	6
<i>Rhynchospora gracilentata</i>	6
<i>Rhynchospora grayi</i>	9
<i>Rhynchospora harveyi</i>	8
<i>Rhynchospora inexpansa</i>	4
<i>Rhynchospora macrostachya</i>	8
<i>Rhynchospora microcephala</i>	6
<i>Rhynchospora miliacea</i>	9

Taxon Name	C
<i>Rhynchospora nitens</i>	9
<i>Rhynchospora oligantha</i>	10
<i>Rhynchospora pallida</i>	10
<i>Rhynchospora perplexa</i>	8
<i>Rhynchospora rariflora</i>	8
<i>Rhynchospora recognita</i>	6
<i>Rhynchospora scirpoides</i>	8
<i>Rhynchospora stenophylla</i>	8
<i>Rhynchospora torreyana</i>	7
<i>Rhynchospora wrightiana</i>	8
<i>Ribes americanum</i>	8
<i>Ribes cynosbati</i>	7
<i>Ribes glandulosum</i>	8
<i>Ribes rotundifolium</i>	7
<i>Ribes rubrum</i>	0
<i>Richardia brasiliensis</i>	0
<i>Richardia scabra</i>	0
<i>Robinia hispida</i>	0
<i>Robinia pseudoacacia</i>	2
<i>Rorippa aquatica</i>	9
<i>Rorippa indica</i>	7
<i>Rorippa palustris</i> ssp. <i>palustris</i>	3
<i>Rorippa sessiliflora</i>	6
<i>Rorippa sylvestris</i>	0
<i>Rosa blanda</i>	0
<i>Rosa bracteata</i>	0
<i>Rosa canina</i>	0
<i>Rosa carolina</i> ssp. <i>carolina</i>	5
<i>Rosa carolina</i> ssp. <i>subserrulata</i>	7
<i>Rosa luciae</i>	0
<i>Rosa multiflora</i>	-5
<i>Rosa palustris</i>	6
<i>Rosa rubiginosa</i>	0
<i>Rosa setigera</i>	4
<i>Rosa virginiana</i>	6
<i>Rotala ramosior</i>	4
<i>Rubus allegheniensis</i>	3
<i>Rubus bifrons</i>	0
<i>Rubus canadensis</i>	7
<i>Rubus cuneifolius</i>	3
<i>Rubus dalibarda</i>	8
<i>Rubus discolor</i>	0

Taxon Name	C
<i>Rubus flagellaris</i>	3
<i>Rubus hispidus</i>	5
<i>Rubus idaeus</i> var. <i>strigosus</i>	7
<i>Rubus laciniatus</i>	0
<i>Rubus occidentalis</i>	2
<i>Rubus odoratus</i>	7
<i>Rubus pensilvanicus</i>	2
<i>Rubus phoenicolasius</i>	-5
<i>Rubus trivialis</i>	4
<i>Rudbeckia fulgida</i>	5
<i>Rudbeckia heliopsidis</i>	8
<i>Rudbeckia hirta</i>	3
<i>Rudbeckia laciniata</i> var. <i>digitata</i>	7
<i>Rudbeckia laciniata</i> var. <i>humilis</i>	8
<i>Rudbeckia laciniata</i> var. <i>laciniata</i>	6
<i>Rudbeckia triloba</i> var. <i>beadlei</i>	9
<i>Rudbeckia triloba</i> var. <i>triloba</i>	4
<i>Ruellia caroliniensis</i>	4
<i>Ruellia humilis</i>	8
<i>Ruellia purshiana</i>	8
<i>Ruellia strepens</i>	6
<i>Rumex acetosella</i>	-3
<i>Rumex altissimus</i>	6
<i>Rumex conglomeratus</i>	0
<i>Rumex crispus</i> ssp. <i>crispus</i>	-1
<i>Rumex hastatulus</i>	2
<i>Rumex obtusifolius</i>	0
<i>Rumex pulcher</i>	0
<i>Rumex verticillatus</i>	5
<i>Ruppia maritima</i>	8
<i>Sabatia angularis</i>	5
<i>Sabatia brachiata</i>	6
<i>Sabatia calycina</i>	8
<i>Sabatia campanulata</i>	8
<i>Sabatia difformis</i>	8
<i>Sabatia dodecandra</i>	8
<i>Sabatia quadrangula</i>	7
<i>Sabatia stellaris</i>	8
<i>Saccharum alopecuroides</i>	4
<i>Saccharum baldwinii</i>	4
<i>Saccharum brevibarbe</i> var. <i>contortum</i>	4
<i>Saccharum coarctatum</i>	7

Taxon Name	C
<i>Saccharum giganteum</i>	4
<i>Sacciolepis striata</i>	7
<i>Sagina decumbens</i>	1
<i>Sagittaria australis</i>	5
<i>Sagittaria calycina</i>	8
<i>Sagittaria engelmanniana</i>	9
<i>Sagittaria filiformis</i>	10
<i>Sagittaria graminea</i>	7
<i>Sagittaria lancifolia</i> var. <i>media</i>	7
<i>Sagittaria latifolia</i>	6
<i>Sagittaria platyphylla</i>	0
<i>Sagittaria rigida</i>	9
<i>Sagittaria spatulata</i>	9
<i>Sagittaria subulata</i>	8
<i>Sagittaria weatherbiana</i>	7
<i>Salicornia bigelovii</i>	8
<i>Salicornia virginica</i>	8
<i>Salix alba</i>	0
<i>Salix babylonica</i>	0
<i>Salix caroliniana</i>	4
<i>Salix discolor</i>	9
<i>Salix eriocephala</i>	5
<i>Salix exigua</i> var. <i>sericans</i>	6
<i>Salix fragilis</i>	0
<i>Salix humilis</i>	6
<i>Salix lucida</i>	0
<i>Salix nigra</i>	3
<i>Salix occidentalis</i>	6
<i>Salix purpurea</i>	0
<i>Salix sericea</i>	6
<i>Salpichroa origanifolia</i>	0
<i>Salsola kali</i>	0
<i>Salsola tragus</i>	0
<i>Salvia lyrata</i>	2
<i>Salvia urticifolia</i>	7
<i>Sambucus canadensis</i>	4
<i>Sambucus racemosa</i> var. <i>pubens</i>	6
<i>Samolus parviflorus</i>	5
<i>Sanguinaria canadensis</i>	7
<i>Sanguisorba canadensis</i>	9
<i>Sanicula canadensis</i>	4
<i>Sanicula marilandica</i>	7

Taxon Name	C
<i>Sanicula odorata</i>	6
<i>Sanicula smallii</i>	7
<i>Sanicula trifoliata</i>	7
<i>Saponaria officinalis</i>	0
<i>Sarcocornia pacifica</i>	8
<i>Sarracenia flava</i>	9
<i>Sarracenia purpurea</i>	8
<i>Sassafras albidum</i>	4
<i>Saururus cernuus</i>	6
<i>Sceptridium biternatum</i>	5
<i>Sceptridium dissectum</i>	5
<i>Sceptridium jenmanii</i>	6
<i>Sceptridium multifidum</i>	8
<i>Sceptridium oneidense</i>	7
<i>Schedonorus arundinaceus</i>	0
<i>Schizachne purpurascens</i>	8
<i>Schizachyrium littorale</i>	9
<i>Schizachyrium scoparium</i> var. <i>scoparium</i>	5
<i>Schoenoplectus acutus</i> var. <i>acutus</i>	9
<i>Schoenoplectus americanus</i>	7
<i>Schoenoplectus etuberculatus</i>	9
<i>Schoenoplectus pungens</i> var. <i>pungens</i>	5
<i>Schoenoplectus purshianus</i>	4
<i>Schoenoplectus smithii</i>	9
<i>Schoenoplectus subterminalis</i>	9
<i>Schoenoplectus tabernaemontani</i>	5
<i>Schoenoplectus torreyi</i>	10
<i>Schwalbea americana</i>	9
<i>Scirpus ancistrochaetus</i>	10
<i>Scirpus atrovirens</i>	5
<i>Scirpus cyperinus</i>	2
<i>Scirpus divaricatus</i>	8
<i>Scirpus expansus</i>	6
<i>Scirpus flaccidifolius</i>	7
<i>Scirpus georgianus</i>	6
<i>Scirpus hattorianus</i>	7
<i>Scirpus lineatus</i>	8
<i>Scirpus pendulus</i>	6
<i>Scirpus polyphyllus</i>	5
<i>Scleranthus annuus</i>	0
<i>Scleria ciliata</i> var. <i>ciliata</i>	7
<i>Scleria elliotii</i>	7

Taxon Name	C
<i>Scleria minor</i>	9
<i>Scleria muehlenbergii</i>	7
<i>Scleria oligantha</i>	7
<i>Scleria pauciflora</i> var. <i>caroliniana</i>	7
<i>Scleria pauciflora</i> var. <i>pauciflora</i>	6
<i>Scleria triglomerata</i>	6
<i>Scleria verticillata</i>	9
<i>Sclerolepis uniflora</i>	10
<i>Scrophularia lanceolata</i>	6
<i>Scrophularia marilandica</i>	5
<i>Scutellaria elliptica</i> var. <i>elliptica</i>	7
<i>Scutellaria elliptica</i> var. <i>hirsuta</i>	7
<i>Scutellaria galericulata</i>	9
<i>Scutellaria incana</i>	7
<i>Scutellaria integrifolia</i>	5
<i>Scutellaria lateriflora</i>	6
<i>Scutellaria leonardii</i>	8
<i>Scutellaria nervosa</i>	7
<i>Scutellaria ovata</i> ssp. <i>ovata</i>	8
<i>Scutellaria ovata</i> ssp. <i>rugosa</i>	8
<i>Scutellaria saxatilis</i>	8
<i>Scutellaria serrata</i>	7
<i>Secale cereale</i>	0
<i>Securigera varia</i>	-1
<i>Sedum acre</i>	0
<i>Sedum glaucophyllum</i>	8
<i>Sedum sarmentosum</i>	0
<i>Sedum ternatum</i>	6
<i>Senecio suaveolens</i>	8
<i>Senecio vulgaris</i>	0
<i>Senna hebecarpa</i>	4
<i>Senna marilandica</i>	5
<i>Senna obtusifolia</i>	0
<i>Senna occidentalis</i>	0
<i>Sericocarpus asteroides</i>	5
<i>Sericocarpus linifolius</i>	6
<i>Sesbania punicea</i>	0
<i>Sesuvium maritimum</i>	8
<i>Setaria faberi</i>	0
<i>Setaria italica</i>	0
<i>Setaria magna</i>	4
<i>Setaria parviflora</i>	3

Taxon Name	C
<i>Setaria pumila</i> ssp. <i>pumila</i>	0
<i>Setaria verticillata</i>	0
<i>Setaria viridis</i> var. <i>viridis</i>	0
<i>Seymeria cassioides</i>	8
<i>Sibbaldia tridentata</i>	9
<i>Sicyos angulatus</i>	3
<i>Sida elliotii</i> var. <i>elliotii</i>	8
<i>Sida hermaphrodita</i>	6
<i>Sida rhombifolia</i> var. <i>rhombifolia</i>	0
<i>Sida spinosa</i>	0
<i>Sideroxylon lycioides</i>	7
<i>Silene antirrhina</i>	3
<i>Silene armeria</i>	0
<i>Silene caroliniana</i> var. <i>pennsylvanica</i>	6
<i>Silene coronaria</i>	0
<i>Silene dichotoma</i> ssp. <i>dichotoma</i>	0
<i>Silene latifolia</i>	0
<i>Silene nivea</i>	8
<i>Silene noctiflora</i>	0
<i>Silene ovata</i>	9
<i>Silene rotundifolia</i>	9
<i>Silene stellata</i>	6
<i>Silene virginica</i>	6
<i>Silene vulgaris</i>	0
<i>Silphium asteriscus</i>	7
<i>Silphium compositum</i> var. <i>compositum</i>	7
<i>Silphium compositum</i> var. <i>reniforme</i>	7
<i>Silphium perfoliatum</i> var. <i>connatum</i>	7
<i>Silphium perfoliatum</i> var. <i>perfoliatum</i>	8
<i>Silphium terebinthinaceum</i>	9
<i>Sisymbrium altissimum</i>	0
<i>Sisymbrium officinale</i>	0
<i>Sisyrinchium albidum</i>	9
<i>Sisyrinchium angustifolium</i>	4
<i>Sisyrinchium atlanticum</i>	6
<i>Sisyrinchium capillare</i>	8
<i>Sisyrinchium fuscum</i>	7
<i>Sisyrinchium mucronatum</i>	4
<i>Sisyrinchium rosulatum</i>	0
<i>Sium suave</i>	6
<i>Smallanthus uvedalia</i>	5
<i>Smilax bona-nox</i>	4

Taxon Name	C
<i>Smilax ecirrata</i>	8
<i>Smilax glauca</i>	5
<i>Smilax herbacea</i>	5
<i>Smilax hispida</i>	5
<i>Smilax laurifolia</i>	6
<i>Smilax pseudochina</i>	7
<i>Smilax pulverulenta</i>	6
<i>Smilax rotundifolia</i>	3
<i>Smilax walteri</i>	7
<i>Solanum carolinense</i> var. <i>carolinense</i>	2
<i>Solanum dulcamara</i>	0
<i>Solanum lycopersicum</i>	0
<i>Solanum ptychanthum</i>	2
<i>Solanum rostratum</i>	0
<i>Solanum sarrachoides</i>	0
<i>Solidago altissima</i> ssp. <i>altissima</i>	3
<i>Solidago arguta</i> var. <i>arguta</i>	7
<i>Solidago arguta</i> var. <i>caroliniana</i>	7
<i>Solidago bicolor</i>	5
<i>Solidago caesia</i> var. <i>caesia</i>	6
<i>Solidago canadensis</i> var. <i>canadensis</i>	3
<i>Solidago canadensis</i> var. <i>hargerii</i>	4
<i>Solidago curtisii</i>	6
<i>Solidago erecta</i>	5
<i>Solidago faucibus</i>	8
<i>Solidago fistulosa</i>	6
<i>Solidago flaccidifolia</i>	7
<i>Solidago flexicaulis</i>	6
<i>Solidago gigantea</i>	4
<i>Solidago gracillima</i>	8
<i>Solidago harrisii</i>	9
<i>Solidago hispida</i>	7
<i>Solidago juncea</i>	3
<i>Solidago lancifolia</i>	9
<i>Solidago latissimifolia</i>	7
<i>Solidago nemoralis</i> var. <i>nemoralis</i>	4
<i>Solidago odora</i>	5
<i>Solidago patula</i> var. <i>patula</i>	8
<i>Solidago patula</i> var. <i>strictula</i>	9
<i>Solidago pinetorum</i>	4
<i>Solidago puberula</i> var. <i>puberula</i>	6
<i>Solidago puberula</i> var. <i>pulverulenta</i>	6

Taxon Name	C
<i>Solidago racemosa</i>	9
<i>Solidago randii</i>	9
<i>Solidago rigida</i> var. <i>glabrata</i>	8
<i>Solidago rigida</i> var. <i>rigida</i>	8
<i>Solidago roanensis</i>	7
<i>Solidago rugosa</i>	3
<i>Solidago rupestris</i>	9
<i>Solidago sempervirens</i> var. <i>mexicana</i>	8
<i>Solidago sempervirens</i> var. <i>sempervirens</i>	7
<i>Solidago speciosa</i> var. <i>speciosa</i>	6
<i>Solidago sphacelata</i>	7
<i>Solidago squarrosa</i>	7
<i>Solidago tarda</i>	8
<i>Solidago tortifolia</i>	9
<i>Solidago uliginosa</i> var. <i>uliginosa</i>	9
<i>Solidago ulmifolia</i>	6
<i>Soliva sessilis</i>	0
<i>Sonchus arvensis</i> var. <i>glabrescens</i>	0
<i>Sonchus asper</i>	0
<i>Sonchus oleraceus</i>	0
<i>Sophranthe pilosa</i>	5
<i>Sorbus americana</i>	7
<i>Sorghastrum elliotii</i>	7
<i>Sorghastrum nutans</i>	6
<i>Sorghum halepense</i>	-5
<i>Sparganium americanum</i>	6
<i>Sparganium emersum</i>	8
<i>Sparganium eurycarpum</i>	7
<i>Spartina alterniflora</i>	7
<i>Spartina cynosuroides</i>	8
<i>Spartina patens</i>	7
<i>Spartina pectinata</i>	8
<i>Spergula arvensis</i>	0
<i>Spergula pentandra</i>	0
<i>Spergularia salina</i>	8
<i>Spermacoce glabra</i>	7
<i>Spermolepis divaricata</i>	0
<i>Sphenopholis filiformis</i>	8
<i>Sphenopholis nitida</i>	7
<i>Sphenopholis obtusata</i>	3
<i>Sphenopholis pennsylvanica</i>	7
<i>Spinulum annotinum</i>	7

Taxon Name	C
<i>Spiraea alba</i>	6
<i>Spiraea corymbosa</i>	7
<i>Spiraea japonica</i>	-3
<i>Spiraea latifolia</i>	7
<i>Spiraea prunifolia</i>	0
<i>Spiraea tomentosa</i>	6
<i>Spiraea virginiana</i>	9
<i>Spiranthes cernua</i>	7
<i>Spiranthes eatonii</i>	8
<i>Spiranthes lacera</i> var. <i>gracilis</i>	4
<i>Spiranthes lucida</i>	7
<i>Spiranthes magnicamporum</i>	10
<i>Spiranthes ochroleuca</i>	7
<i>Spiranthes odorata</i>	8
<i>Spiranthes ovalis</i> var. <i>erostellata</i>	7
<i>Spiranthes praecox</i>	7
<i>Spiranthes sylvatica</i>	8
<i>Spiranthes tuberosa</i>	5
<i>Spiranthes vernalis</i>	6
<i>Spirodela polyrrhiza</i>	5
<i>Sporobolus clandestinus</i>	6
<i>Sporobolus compositus</i> var. <i>compositus</i>	7
<i>Sporobolus heterolepis</i>	9
<i>Sporobolus indicus</i>	0
<i>Sporobolus junceus</i>	8
<i>Sporobolus neglectus</i>	6
<i>Sporobolus ozarkanus</i>	9
<i>Sporobolus vaginiflorus</i>	3
<i>Stachys appalachiana</i>	8
<i>Stachys arenicola</i>	8
<i>Stachys aspera</i>	7
<i>Stachys cordata</i>	7
<i>Stachys eplingii</i>	8
<i>Stachys floridana</i>	0
<i>Stachys hispida</i>	5
<i>Stachys hyssopifolia</i>	5
<i>Stachys latidens</i>	7
<i>Stachys matthewsii</i>	7
<i>Stachys palustris</i>	0
<i>Stachys subcordata</i>	8
<i>Stachys tenuifolia</i>	5
<i>Staphylea trifolia</i>	6

Taxon Name	C
<i>Steinchisma hians</i>	6
<i>Stellaria alsine</i>	7
<i>Stellaria corei</i>	7
<i>Stellaria graminea</i>	0
<i>Stellaria longifolia</i>	5
<i>Stellaria media</i>	-3
<i>Stellaria pallida</i>	0
<i>Stellaria pubera</i>	6
<i>Stenanthium densum</i>	8
<i>Stenanthium gramineum</i>	8
<i>Stenanthium leimanthoides</i>	10
<i>Stewartia malacodendron</i>	7
<i>Stewartia ovata</i>	8
<i>Stillingia sylvatica</i> ssp. <i>sylvatica</i>	8
<i>Stipulicida setacea</i> var. <i>setacea</i>	9
<i>Streptopus amplexifolius</i>	10
<i>Streptopus lanceolatus</i>	8
<i>Strophostyles helvola</i>	4
<i>Strophostyles umbellata</i>	4
<i>Stuckenia pectinata</i>	7
<i>Stylisma humistrata</i>	7
<i>Stylophorum diphyllum</i>	8
<i>Stylosanthes biflora</i>	4
<i>Styrax americanus</i> var. <i>americanus</i>	7
<i>Styrax grandifolius</i>	7
<i>Suaeda linearis</i>	8
<i>Suaeda maritima</i>	0
<i>Sullivantia sullivantii</i>	10
<i>Symphoricarpos albus</i> var. <i>albus</i>	8
<i>Symphoricarpos albus</i> var. <i>laevigatus</i>	0
<i>Symphoricarpos orbiculatus</i>	4
<i>Symphyotrichum concolor</i>	6
<i>Symphyotrichum cordifolium</i>	5
<i>Symphyotrichum divaricatum</i>	0
<i>Symphyotrichum dumosum</i> var. <i>dumosum</i>	3
<i>Symphyotrichum dumosum</i> var. <i>strictior</i>	9
<i>Symphyotrichum elliottii</i>	8
<i>Symphyotrichum ericoides</i> var. <i>ericoides</i>	6
<i>Symphyotrichum grandiflorum</i>	6
<i>Symphyotrichum laeve</i> var. <i>concinnum</i>	7
<i>Symphyotrichum laeve</i> var. <i>laeve</i>	6
<i>Symphyotrichum lanceolatum</i> var. <i>lanceolatum</i>	3

Taxon Name	C
<i>Symphyotrichum lateriflorum</i>	6
<i>Symphyotrichum lowricanum</i>	6
<i>Symphyotrichum novae-angliae</i>	5
<i>Symphyotrichum novi-belgii</i>	6
<i>Symphyotrichum oblongifolium</i>	7
<i>Symphyotrichum ontarionis</i> var. <i>ontarionis</i>	7
<i>Symphyotrichum patens</i> var. <i>patens</i>	5
<i>Symphyotrichum phlogifolium</i>	7
<i>Symphyotrichum pilosum</i> var. <i>pilosum</i>	2
<i>Symphyotrichum pilosum</i> var. <i>pringlei</i>	2
<i>Symphyotrichum praealtum</i> var. <i>angustior</i>	8
<i>Symphyotrichum pratense</i>	9
<i>Symphyotrichum prenanthoides</i>	7
<i>Symphyotrichum puniceum</i> var. <i>puniceum</i>	4
<i>Symphyotrichum racemosum</i> var. <i>racemosum</i>	3
<i>Symphyotrichum shortii</i>	7
<i>Symphyotrichum subulatum</i>	8
<i>Symphyotrichum tenuifolium</i>	8
<i>Symphyotrichum undulatum</i>	5
<i>Symphyotrichum urophyllum</i>	8
<i>Symphytum officinale</i>	0
<i>Symplocarpus foetidus</i>	8
<i>Symplocos tinctoria</i>	6
<i>Synandra hispidula</i>	9
<i>Syringa vulgaris</i>	0
<i>Taenidia integerrima</i>	7
<i>Taenidia montana</i>	9
<i>Tagetes minuta</i>	0
<i>Tanacetum vulgare</i>	0
<i>Taraxacum erythrospermum</i>	0
<i>Taraxacum officinale</i>	0
<i>Tarenaya hassleriana</i>	0
<i>Taxodium ascendens</i>	9
<i>Taxodium distichum</i>	8
<i>Taxus canadensis</i>	9
<i>Teesdalia nudicaulis</i>	0
<i>Tephrosia spicata</i>	7
<i>Tephrosia virginiana</i>	6
<i>Tetragonotheca helianthoides</i>	7
<i>Teucrium canadense</i>	5
<i>Thalictrum clavatum</i>	8

Taxon Name	C
<i>Thalictrum coriaceum</i>	8
<i>Thalictrum dioicum</i>	7
<i>Thalictrum macrostylum</i>	8
<i>Thalictrum pubescens</i>	7
<i>Thalictrum revolutum</i>	7
<i>Thalictrum thalictroides</i>	6
<i>Thaspium barbinode</i>	6
<i>Thaspium trifoliatum</i>	7
<i>Thelypteris palustris</i> var. <i>pubescens</i>	7
<i>Thermopsis mollis</i>	7
<i>Thlaspi alliaceum</i>	0
<i>Thlaspi arvense</i>	0
<i>Thuja occidentalis</i>	8
<i>Tiarella cordifolia</i>	6
<i>Tilia americana</i> var. <i>americana</i>	8
<i>Tilia americana</i> var. <i>heterophylla</i>	7
<i>Tillandsia usneoides</i>	8
<i>Tipularia discolor</i>	6
<i>Torilis arvensis</i>	0
<i>Torilis japonica</i>	0
<i>Torreyochloa pallida</i> var. <i>pallida</i>	8
<i>Toxicodendron pubescens</i>	5
<i>Toxicodendron radicans</i> var. <i>negundo</i>	5
<i>Toxicodendron radicans</i> var. <i>pubens</i>	7
<i>Toxicodendron radicans</i> var. <i>radicans</i>	2
<i>Toxicodendron rydbergii</i>	8
<i>Toxicodendron vernix</i>	7
<i>Trachelospermum difforme</i>	5
<i>Tradescantia ohiensis</i>	5
<i>Tradescantia subaspera</i>	7
<i>Tradescantia virginiana</i>	7
<i>Tragia urens</i>	6
<i>Tragia urticifolia</i>	7
<i>Tragopogon dubius</i>	0
<i>Tragopogon porrifolius</i>	0
<i>Tragopogon pratensis</i>	0
<i>Trapa natans</i>	-1
<i>Trautvetteria caroliniensis</i>	7
<i>Triantha glutinosa</i>	10
<i>Triantha racemosa</i>	9
<i>Trichophorum planifolium</i>	7
<i>Trichostema brachiatum</i>	7

Taxon Name	C
<i>Trichostema dichotomum</i>	4
<i>Trichostema setaceum</i>	8
<i>Tridens chapmanii</i>	8
<i>Tridens flavus</i>	3
<i>Tridens strictus</i>	6
<i>Trientalis borealis</i>	8
<i>Trifolium arvense</i>	0
<i>Trifolium aureum</i>	0
<i>Trifolium calcaricum</i>	9
<i>Trifolium campestre</i>	0
<i>Trifolium dubium</i>	0
<i>Trifolium hybridum</i>	0
<i>Trifolium incarnatum</i>	0
<i>Trifolium pratense</i>	0
<i>Trifolium reflexum</i>	8
<i>Trifolium repens</i>	0
<i>Trifolium virginicum</i>	9
<i>Triglochin striata</i>	9
<i>Trillium cernuum</i>	8
<i>Trillium erectum</i>	7
<i>Trillium flexipes</i>	8
<i>Trillium grandiflorum</i>	7
<i>Trillium luteum</i>	0
<i>Trillium nivale</i>	9
<i>Trillium pusillum</i> var. <i>virginianum</i>	9
<i>Trillium sessile</i>	7
<i>Trillium sulcatum</i>	7
<i>Trillium undulatum</i>	8
<i>Triodanis biflora</i>	2
<i>Triodanis perfoliata</i>	1
<i>Triosteum angustifolium</i>	7
<i>Triosteum aurantiacum</i> var. <i>aurantiacum</i>	6
<i>Triosteum perfoliatum</i>	5
<i>Triphora trianthophora</i> ssp. <i>trianthophora</i>	8
<i>Triplasis purpurea</i> var. <i>purpurea</i>	7
<i>Tripsacum dactyloides</i> var. <i>dactyloides</i>	2
<i>Trisetum spicatum</i>	10
<i>Tristagma uniflorum</i>	0
<i>Tsuga canadensis</i>	7
<i>Tsuga caroliniana</i>	8
<i>Turritis glabra</i>	5
<i>Tussilago farfara</i>	0

Taxon Name	C
<i>Typha angustifolia</i>	3
<i>Typha domingensis</i>	8
<i>Typha latifolia</i>	2
<i>Ulmus alata</i>	4
<i>Ulmus americana</i>	5
<i>Ulmus parvifolia</i>	0
<i>Ulmus pumila</i>	-1
<i>Ulmus rubra</i>	6
<i>Uniola paniculata</i>	10
<i>Urochloa platyphylla</i>	0
<i>Urochloa ramosa</i>	0
<i>Urtica dioica</i>	-5
<i>Urtica gracilis</i>	6
<i>Utricularia biflora</i>	6
<i>Utricularia geminiscapa</i>	7
<i>Utricularia gibba</i>	6
<i>Utricularia inflata</i>	7
<i>Utricularia juncea</i>	7
<i>Utricularia macrorhiza</i>	9
<i>Utricularia olivacea</i>	6
<i>Utricularia purpurea</i>	8
<i>Utricularia radiata</i>	7
<i>Utricularia striata</i>	8
<i>Utricularia subulata</i>	6
<i>Uvularia grandiflora</i>	7
<i>Uvularia perfoliata</i>	6
<i>Uvularia puberula</i>	7
<i>Uvularia sessilifolia</i>	7
<i>Vaccinium altomontanum</i>	8
<i>Vaccinium angustifolium</i>	7
<i>Vaccinium arboreum</i>	6
<i>Vaccinium caesariense</i>	7
<i>Vaccinium corymbosum</i>	6
<i>Vaccinium crassifolium</i>	9
<i>Vaccinium elliotii</i>	7
<i>Vaccinium erythrocarpum</i>	8
<i>Vaccinium formosum</i>	5
<i>Vaccinium fuscum</i>	5
<i>Vaccinium macrocarpon</i>	9
<i>Vaccinium myrtilloides</i>	8
<i>Vaccinium pallidum</i>	4
<i>Vaccinium simulatum</i>	6

Taxon Name	C
<i>Vaccinium stamineum</i>	5
<i>Vaccinium tenellum</i>	6
<i>Valeriana pauciflora</i>	8
<i>Valerianella chenopodiifolia</i>	5
<i>Valerianella locusta</i>	0
<i>Valerianella radiata</i>	2
<i>Valerianella umbilicata</i>	3
<i>Vallisneria americana</i>	8
<i>Vandenboschia boschiana</i>	10
<i>Veratrum hybridum</i>	8
<i>Veratrum parviflorum</i>	8
<i>Veratrum virginicum</i>	8
<i>Veratrum viride</i>	7
<i>Verbascum blattaria</i>	0
<i>Verbascum lychnitis</i>	0
<i>Verbascum phlomoides</i>	0
<i>Verbascum thapsus</i>	0
<i>Verbena brasiliensis</i>	0
<i>Verbena hastata</i>	4
<i>Verbena officinalis</i>	0
<i>Verbena scabra</i>	6
<i>Verbena simplex</i>	4
<i>Verbena urticifolia</i>	3
<i>Verbesina alternifolia</i>	3
<i>Verbesina occidentalis</i>	2
<i>Verbesina virginica</i> var. <i>virginica</i>	7
<i>Vernonia gigantea</i>	5
<i>Vernonia glauca</i>	6
<i>Vernonia noveboracensis</i>	6
<i>Veronica agrestis</i>	0
<i>Veronica americana</i>	6
<i>Veronica anagallis-aquatica</i>	5
<i>Veronica arvensis</i>	0
<i>Veronica hederifolia</i>	-3
<i>Veronica officinalis</i>	2
<i>Veronica peregrina</i> var. <i>peregrina</i>	2
<i>Veronica persica</i>	0
<i>Veronica scutellata</i>	8
<i>Veronica serpyllifolia</i> var. <i>serpyllifolia</i>	0
<i>Veronicastrum virginicum</i>	7
<i>Viburnum acerifolium</i>	6
<i>Viburnum cassinoides</i>	7

Taxon Name	C
<i>Viburnum dentatum</i> var. <i>dentatum</i>	5
<i>Viburnum dentatum</i> var. <i>lucidum</i>	5
<i>Viburnum dilatatum</i>	-3
<i>Viburnum lantanoides</i>	8
<i>Viburnum lentago</i>	6
<i>Viburnum nudum</i>	6
<i>Viburnum opulus</i> var. <i>opulus</i>	0
<i>Viburnum prunifolium</i>	5
<i>Viburnum rafinesqueanum</i>	7
<i>Viburnum rufidulum</i>	6
<i>Vicia americana</i> var. <i>americana</i>	8
<i>Vicia caroliniana</i>	6
<i>Vicia cracca</i>	0
<i>Vicia grandiflora</i>	0
<i>Vicia hirsuta</i>	0
<i>Vicia lathyroides</i>	0
<i>Vicia sativa</i> ssp. <i>nigra</i>	0
<i>Vicia sativa</i> ssp. <i>sativa</i>	0
<i>Vicia tetrasperma</i>	0
<i>Vicia villosa</i> ssp. <i>varia</i>	0
<i>Vicia villosa</i> ssp. <i>villosa</i>	0
<i>Vinca major</i>	-1
<i>Vinca minor</i>	-1
<i>Viola affinis</i>	6
<i>Viola arvensis</i>	0
<i>Viola bicolor</i>	2
<i>Viola blanda</i>	7
<i>Viola brittoniana</i>	7
<i>Viola canadensis</i> var. <i>canadensis</i>	7
<i>Viola cucullata</i>	6
<i>Viola esculenta</i>	7
<i>Viola hastata</i>	6
<i>Viola hirsutula</i>	6
<i>Viola incognita</i>	7
<i>Viola labradorica</i>	7
<i>Viola lanceolata</i> var. <i>lanceolata</i>	6
<i>Viola lanceolata</i> var. <i>vittata</i>	7
<i>Viola macloskeyi</i> var. <i>pallens</i>	7
<i>Viola odorata</i>	0
<i>Viola palmata</i>	6
<i>Viola pedata</i> var. <i>pedata</i>	5
<i>Viola pedatifida</i>	10

Taxon Name	C
<i>Viola pensylvanica</i>	6
<i>Viola primulifolia</i>	6
<i>Viola pubescens</i>	7
<i>Viola rostrata</i>	7
<i>Viola rotundifolia</i>	7
<i>Viola sagittata</i> var. <i>ovata</i>	4
<i>Viola sagittata</i> var. <i>sagittata</i>	5
<i>Viola septentrionalis</i>	6
<i>Viola sororia</i>	3
<i>Viola striata</i>	4
<i>Viola subsinuata</i>	7
<i>Viola tripartita</i>	8
<i>Viola walteri</i> var. <i>walteri</i>	7
<i>Vitex rotundifolia</i>	-5
<i>Vitis aestivalis</i> var. <i>aestivalis</i>	5
<i>Vitis aestivalis</i> var. <i>bicolor</i>	4
<i>Vitis cinerea</i> var. <i>baileyana</i>	4
<i>Vitis cinerea</i> var. <i>floridana</i>	4
<i>Vitis labrusca</i>	4
<i>Vitis palmata</i>	5
<i>Vitis riparia</i>	5
<i>Vitis rotundifolia</i> var. <i>rotundifolia</i>	4
<i>Vitis rupestris</i>	8
<i>Vitis vulpina</i>	4
<i>Vittaria appalachiana</i>	10
<i>Vulpia myuros</i>	0
<i>Vulpia octoflora</i>	4
<i>Vulpia sciurea</i>	2
<i>Wisteria floribunda</i>	-1
<i>Wisteria frutescens</i>	6
<i>Wisteria sinensis</i>	-3
<i>Wolffia brasiliensis</i>	4
<i>Wolffia columbiana</i>	5
<i>Wolffiella gladiata</i>	5
<i>Woodsia appalachiana</i>	9
<i>Woodsia ilvensis</i>	9
<i>Woodsia obtusa</i> ssp. <i>obtusa</i>	6
<i>Woodwardia areolata</i>	5
<i>Woodwardia virginica</i>	7
<i>Xanthium spinosum</i>	0
<i>Xanthium strumarium</i>	1
<i>Xanthorhiza simplicissima</i>	7

Taxon Name	C
<i>Xerophyllum asphodeloides</i>	7
<i>Xyris ambigua</i>	8
<i>Xyris caroliniana</i>	9
<i>Xyris curtissii</i>	8
<i>Xyris difformis</i>	6
<i>Xyris fimbriata</i>	8
<i>Xyris iridifolia</i>	8
<i>Xyris jupicai</i>	6
<i>Xyris platylepis</i>	7
<i>Xyris torta</i>	6
<i>Youngia japonica</i>	0
<i>Yucca aloifolia</i>	9
<i>Yucca filamentosa</i>	5
<i>Zannichellia palustris</i>	7
<i>Zanthoxylum americanum</i>	8
<i>Zanthoxylum clava-herculis</i>	9
<i>Zea mays</i> ssp. <i>mays</i>	0
<i>Zenobia pulverulenta</i>	9
<i>Zephyranthes atamasca</i>	7
<i>Zigadenus glaberrimus</i>	8
<i>Zizania aquatica</i> var. <i>aquatica</i>	8
<i>Zizaniopsis miliacea</i>	8
<i>Zizia aptera</i>	7
<i>Zizia aurea</i>	7
<i>Zizia trifoliata</i>	6
<i>Zornia bracteata</i>	8
<i>Zostera marina</i>	9