

BANISTERIA

A JOURNAL DEVOTED TO THE NATURAL HISTORY OF VIRGINIA

Published by the Virginia Natural History Society since 1992

Shorter Contributions

Gary R. Graves. Characteristics of a Black Rail (*Laterallus jamaicensis*) Territory in Huntley Meadows, Fairfax County, Virginia. *Banisteria* 41: 94-95. (2013)

Gary R. Graves
Department of Vertebrate Zoology, MRC-116
National Museum of Natural History
Smithsonian Institution
P. O. Box 37012
Washington, DC 20013-7012

The journal *Banisteria* is named for John Banister (1650-1692), who was the first university-trained naturalist to work in Virginia.



Banisteria, Number 41, pages 94-95
© 2013 Virginia Natural History Society

CHARACTERISTICS OF A BLACK RAIL (*LATERALLUS JAMAICENSIS*) TERRITORY IN HUNTLEY MEADOWS, FAIRFAX COUNTY, VIRGINIA.—The Black Rail (*Laterallus jamaicensis*) is a rare breeding species in brackish and salt marshes in the Chesapeake Bay watershed (Robbins & Blom, 1997; Rottenborn & Brinkley, 2007). Occasional inland reports (May-July) suggest sporadic breeding in freshwater marshes although nesting has yet to be documented. The most celebrated Virginia record in recent memory occurred during the summer of 2002, when Kurt Gaskill discovered a singing male on 10 June in the non-tidal freshwater wetlands of Huntley Meadows County Park (HMCP), Fairfax County (Iloff, 2002; Rottenborn & Brinkley, 2007). Observation notebooks archived at HMCP indicate that the rail was reported on at least 21 days from 11 June through 13 July 2002. Although this was the first record of Black Rail in Fairfax County and among only a handful of inland records for Virginia during the past 50 years (Rottenborn & Brinkley, 2007), no documentation was submitted because the Avian Records Committee of the Virginia Society of Ornithology did not require documentation for this species at the time from Coastal Plain localities. The purpose of this note is to present a brief description of the habitat frequented by the rail and notes on its behavior.

I mapped the rail's territory on seven days, 22 June to 4 July, by tracking its vocalizations from the elevated boardwalk that winds across the floodplain of Barnyard Run with a global positioning system (GPS) receiver. The rail frequented a roughly circular area of marsh (ca.



Fig. 1. Stands of lizard's-tail (foreground) and cattail frequented by a Black Rail in Huntley Meadows County Park, Fairfax County, Virginia, from 10 June to 13 July 2002.

0.47 ha) centered inside the boardwalk loop (38°45.24' N, 77°6.28' W). The areas of greatest singing frequency were dominated by thick monocultures of lizard's-tail (*Saururus cernuus*) and scattered patches of cattail (*Typha latifolia*) growing on mud or in shallow water (<5 cm) pooled behind a meandering series of low beaver dams (Fig. 1). Approximately 10% of the territory was covered by pools of open water or exposed mud. The water level in the territory was relatively stable, varying by no more than a few centimeters, during the observation period.

I recorded the rail's vocalizations with a Marantz PMD430 cassette recorder and a Sennheiser ME 80 directional microphone (Fig. 2). The rail delivered the "keekee-doo" song and shorter "kee-doo" variants intermittently from dawn (0515 h) until dusk (1945 h). Both song variants are believed to be given by males (Eddleman et al., 1994). Singing bouts typically lasted

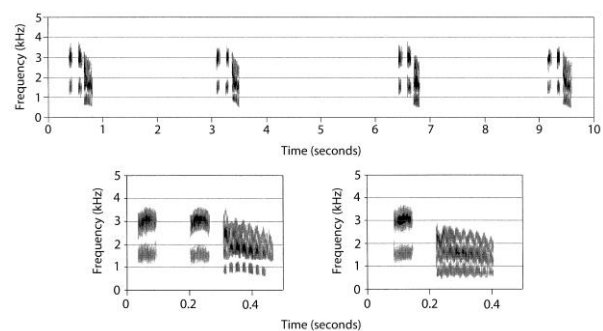


Fig. 2. Audio spectrograms of Black Rail songs recorded at Huntley Meadows County Park, Fairfax County, Virginia, on 3 July 2002. Upper panel shows the temporal spacing of "keekee-doo" songs during a typical singing bout. Spectrographic detail of the first song in the series is shown in the lower left panel. An example of the "kee-doo" song variant is shown in the lower right panel.

several minutes (as long as 13 minutes) followed by silent periods of variable length (few minutes to several hours). The song rate counted during three 1-minute periods was 16, 17, and 19 songs per minute. The rail appeared to be little affected by the presence of observers on the boardwalk. On several occasions it walked under the boardwalk during singing bouts. The presumed male was probably unmated because there was no evidence of additional birds. It apparently departed the area in mid-July, as repeated attempts to relocate the bird in late July and August were unsuccessful.

I thank Phyllis and Mort Isler for making spectrographs from my sound recordings and the staff at HMCP for providing access to the observation logs.

LITERATURE CITED

Eddleman, W. R., R. E. Flores, & M. L. Legare. 1994. Black Rail (*Laterallus jamaicensis*). No. 123 in A. Poole & F. Gill (eds.), *The Birds of North America*. Academy of Natural Sciences, Philadelphia, and American Ornithologists' Union, Washington, DC.

Iliff, M. J. 2002. Middle Atlantic Coast. *North American Birds* 56: 423-426.

Robbins, C. S., & E. A. T. Blom. 1997. *Atlas of the Breeding Birds of Maryland and the District of Columbia*. University of Pittsburgh Press, Pittsburgh, PA. 504 pp.

Rottenborn, S. C., & E. S. Brinkley. 2007. Virginia's Birdlife: An Annotated Checklist. (*Virginia Avifauna* No. 7). Virginia Society of Ornithology. 330 pp.

Gary R. Graves
Department of Vertebrate Zoology, MRC-116
National Museum of Natural History
Smithsonian Institution
P.O. Box 37012
Washington, DC 20013-7012